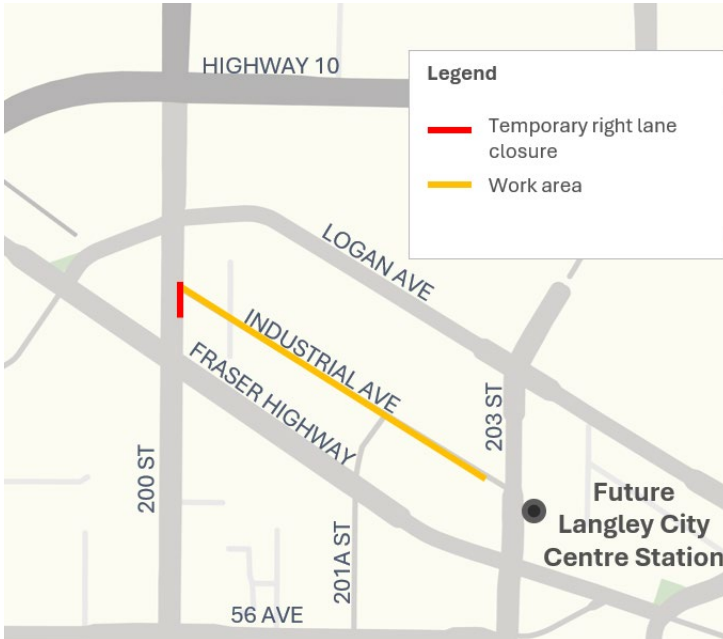




Updated: Pile driving and extended hours on Industrial Avenue

This is an update to the notice distributed on May 11, 2026 to reflect **extended hours and traffic updates.**



Map: Industrial Avenue between 200 Street and 203 Street.

Mitigations such as noise shrouds around pile driving equipment and noise blankets on fencing will be in place where possible.

Business access will be maintained. Our team will be in contact with businesses to discuss access as work progresses.

Construction of the Surrey Langley SkyTrain is underway; construction of the elevated guideway is underway on Industrial Avenue between 200 Street and 203 Street.

Pile driving for column foundations has begun and is expected to continue through **early 2027**. Crews will start at 200 Street and work east. To advance construction in this area, extended hours will be in effect. Please be aware of the following:

- Mobilization to the area is underway. Crane mats, office trailers, fencing and crew parking will be placed in the project area on Industrial Avenue.
- Pile driving activities can increase noise and cause vibrations.
- Intermittent overnight welding activities will occur. These activities are not expected to significantly increase noise.
- **Work may occur on Sundays and Statutory Holidays beginning July 12, 2026. Pile driving will not take place before 9 a.m. or after 5 p.m. on Sundays and Statutory Holidays.**
- Access for pedestrians and cyclists is located on the north side of Industrial Avenue.
- Eastbound traffic only will continue on Industrial Avenue from 200 Street to 203 Street.
- Temporary right lane closure northbound 200 Street at Industrial Avenue **in effect until mid-July 2026.**

Contact

Website: surreylangleyskytrain.gov.bc.ca

Email: surreylangleyskytrain@gov.bc.ca

24/7 Information Line: 1-844-815-6111

Thank you for your cooperation and understanding.

ਜ਼ਰੂਰੀ ਜਾਣਕਾਰੀ: ਕਿਰਪਾ ਕਰਕੇ ਇਸਦਾ ਅਨੁਵਾਦ ਕਰਵਾਓ
 ज़रूरी जानकारी: कृपया इसका अनुवाद करवाएं
MAHALAGANG IMPORMASYON: Mangyaring isalin ito
重要資訊: 請找人為你翻譯
중요정보: 번역해주세요



What to Expect



Timing

In effect through early 2027.



Hours of Work

Construction hours: 7 a.m. to 10 p.m.
Monday to Sunday.

- Welding activities may occur overnight.
- **Pile driving activities may occur on Sundays and Statutory Holidays starting July 12 from 9 a.m. to 5 p.m.**



Traffic

Eastbound only traffic on Industrial Avenue. Right lane closure northbound 200 Street near Industrial Avenue **in effect until mid-July 2026.**



Impacts/Interruptions

Intermittent noise and vibrations. You may notice things like water in glasses moving or light fixtures swaying. Vibrations are assessed prior to construction and monitored at active work areas to ensure building structures are not affected.

Contact

Website: surreylangleyskytrain.gov.bc.ca

Email: surreylangleyskytrain@gov.bc.ca

24/7 Information Line: 1-844-815-6111

Thank you for your cooperation and understanding.

ਜ਼ਰੂਰੀ ਜਾਣਕਾਰੀ: ਕਿਰਪਾ ਕਰਕੇ ਇਸਦਾ ਅਨੁਵਾਦ ਕਰਵਾਓ

ज़रूरी जानकारी: कृपया इसका अनुवाद करवाएं

MAHALAGANG IMPORMASYON: Mangyaring isalin ito

重要資訊: 請找人為你翻譯

중요정보: 번역해주세요