



Langley Launcher building the guideway at future Clayton Station.

About this advisory

Construction of the Surrey Langley SkyTrain Project is underway. This transformative project will provide affordable, reliable transportation for people in Surrey, Langley and across Metro Vancouver. Neighbours and the travelling public can expect construction activity and traffic pattern changes throughout the project corridor through 2029.

This advisory provides an overview of project activities from June to August 2026.

This work is subject to change. Please visit surreylangleyskytrain.ca for the most accurate information and to sign up for traffic and construction updates.

BC Hydro work to support the project is anticipated through winter 2026. Updates about their work can be found at bchydro.com/skytrain

For more detailed traffic information, please refer to our Weekly Traffic Advisory posted Friday afternoons on our website.

Construction hours

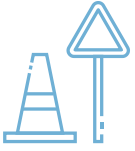
Construction hours across the project are 7 a.m. to 10 p.m. Monday to Saturday with most construction activities completed by 8 p.m.

Some work may need to take place outside regular hours to support overall project requirements and ensure activities can be completed safely and efficiently.

We will provide notice to surrounding residents and businesses with details when longer hours are required.

Key activities

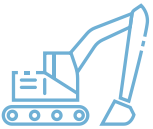
Construction activities include the following:



Roadworks including median and sidewalk removal, intersection signal adjustments, and road widening to accommodate construction. Final roadway restoration, including intersection paving, curb and active transportation installation, occurs following guideway installation.



Utility relocation involves moving overhead and underground utilities to make way for construction activities and equipment.



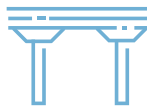
Utility installation (underground duct banks) for the system of pipes that will house the electrical and communication lines needed to power the future SkyTrain. This involves excavation and trenches on the road.



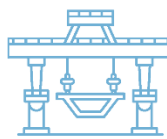
Propulsion Power Substation (PPS) construction for the system that will power the future SkyTrain. This involves excavation, foundations and structure installation. Most PPS are located within station areas. There are three stand-alone PPS at 96 Avenue, Highway 15 and 201 Street.



Station construction including foundation construction, headhouse construction and station mezzanine installation.



Guideway construction using either drilling or pile driving. Once foundations are complete, formwork is installed, and concrete poured to form the columns.



Four launching gantries are building the elevated guideway along the Surrey Langley SkyTrain alignment. A launching gantry is a large, specialized lifting machine used to lift precast concrete segments into place.



Track installation involves placing, welding, connecting, and fastening running rail, power rail and Linear Induction Motor rail (LIM) on the elevated guideway, as well as installing walkway covers.

Impacts

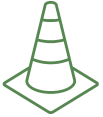
The following impacts can be anticipated:



Businesses: Access to businesses may change but will remain accessible throughout construction with signs placed to direct road users.



Vibration: There may be an increase in vibration near construction activities, including from equipment movement and foundation construction. Vibration levels are assessed in advance and monitored.



Traffic: Road users can expect single lane traffic in each direction on Fraser Highway, lane closures, short stoppages, traffic pattern changes through intersection and road closures on Fraser Highway from 138 Street in Surrey to 203 Street in Langley, and along Industrial Avenue.



Pedestrians: Will be rerouted around construction areas. Use caution and follow signs. Crosswalk closures may be in effect.



Cyclists: Cyclists may be asked to detour, re-route to multi-use paths, share the lane, or dismount, depending on construction activity.



Transit: Bus stops may be moved or closed in construction areas. Please refer to TransLink signs and their website.



Noise: An increase in noise from construction activities is expected. Pile driving for foundation construction will temporarily increase noise levels. Noise levels are monitored and will be reduced as much as possible.



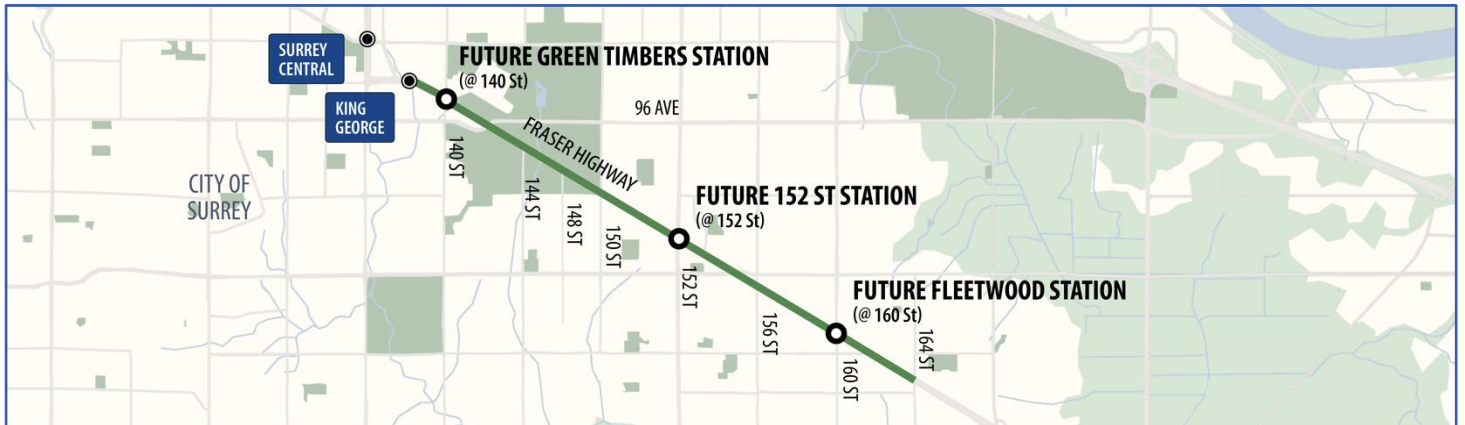
Night work: To reduce impacts to traffic and businesses, some night work will occur. Current night work activities include utility relocations and installations, foundation construction, welding, guideway segment deliveries to the launching gantries, segment installation and beam lifts.

Construction overview

The following pages provide an overview of current and upcoming construction activities from June 2026 through August 2026 for each project area.

Activities and timelines are subject to change. We will continue to provide specific updates and encourage everyone to sign up for updates at surreylangleyskytrain.ca/notifications.

138 Street to 164 Street



Current activities:

- **Track installation** began in spring 2026. This includes delivering rail, lifting and installing rail on the elevated guideway, welding, grinding, and concrete pours. Expect workers and equipment on the elevated guideway, and intermittent traffic stops during rail delivery.
- **Single lane traffic** on Fraser Highway. Traffic is shifted around work areas and across medians and may result in restricted turn movements. Traffic control personnel may stop traffic for up to two minutes. One lane remains open in each direction.
- **Utility work** to prepare for roadway restoration on both sides of Fraser Highway. This work requires temporary access changes and turn restrictions when crossing intersections and driveways.
- **Roadway restoration** where guideway construction is complete, including paving multi-use pathways, sidewalks and driveway access.
- At **Green Timbers Station**, work on the headhouse site is taking place throughout 2026. Current work includes connecting utilities.
- Underground mechanical, electrical and plumbing work is taking place at **152 Street Station**. Concourse and PPS construction is starting and will be ongoing through summer 2026.
- At **Fleetwood Station**, both the station and PPS are actively under construction.
- Guideway construction, including column work continues between 138 Street and 140 Street. This work requires changes to traffic patterns for pedestrians and cyclists.
- **Foundation work** is complete between 138 Street and 166 Street.

- The **Surrey Sprinter** has left 152 Street Station and is moving west towards Green Timbers Station.
- The **Fleetwood Flyer** has completed the guideway spans between Bakerview-166 Street and Fleetwood stations and is moving west towards 152 Street. Expect night work for segment deliveries and installation, and changes to traffic patterns as the launching gantry crosses driveways and intersections.
- **Green Timbers PPS** structural work is complete. Construction is ongoing with the painting and sealing of walls and mechanical, electrical and plumbing work inside the building. Expect lane reductions on 96 Avenue westbound with intermittent stoppages.



The Fleetwood Flyer building the guideway through the future Fleetwood Station.



The Surrey Sprinter is working west of 148 Street on Fraser Highway.



Segment delivery for the Surrey Sprinter.



Station construction at the future Green Timbers Station.

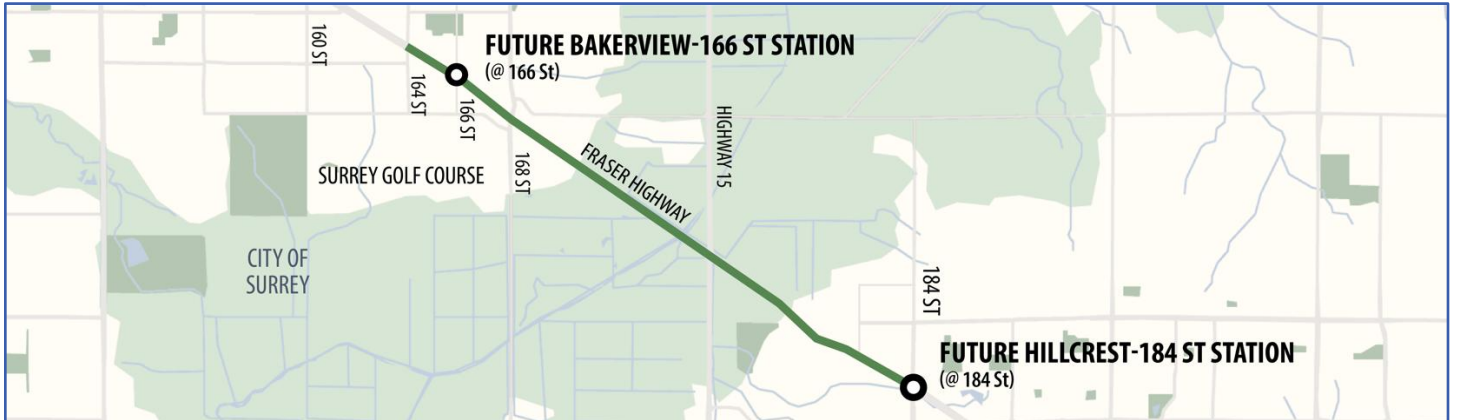
Future activities:

- Continued roadway restoration along Fraser Highway in various areas where guideway construction is complete.
- BC Hydro will begin pulling cables through the underground duct bank between 156 Street and 96 Avenue PPS.

Detailed traffic updates are included in our [Weekly Traffic Advisory](#), available on Fridays on our website.

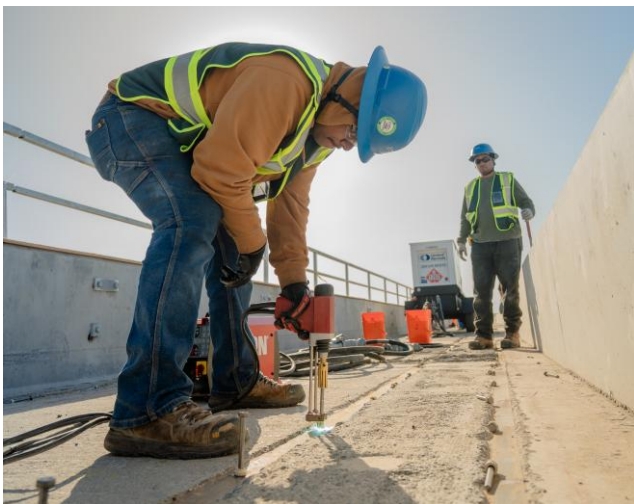
Timelines and work are subject to change.

East of 164 Street to 184 Street

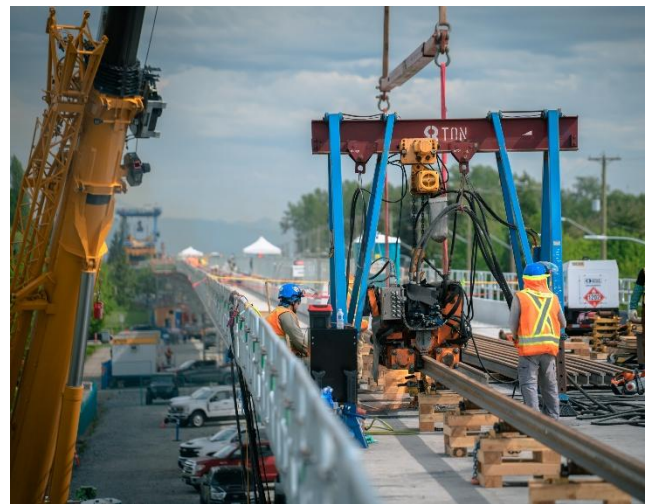


Current activities:

- **Single lane traffic** on Fraser Highway. One lane remains open in each direction; traffic is shifted around work areas and across medians and may result in restricted turn movements. Traffic control personnel may stop traffic for up to two minutes.
- **Utility work** to make way for the future Clayton Station, guideway structures and new utilities along Fraser Highway. This work requires temporary access changes and turn restrictions when crew crosses intersections and driveways. Some night work is required.
- Station construction is underway at **Bakerview-166 Street** and **Hillcrest-184 Street** stations. Foundation work at both stations continues through summer 2026, as well as concourse and PPS construction.
- **Pacific Highway PPS** construction at Highway 15 and Fraser Highway is ongoing with formwork and rebar installation for grade beams underway through June.



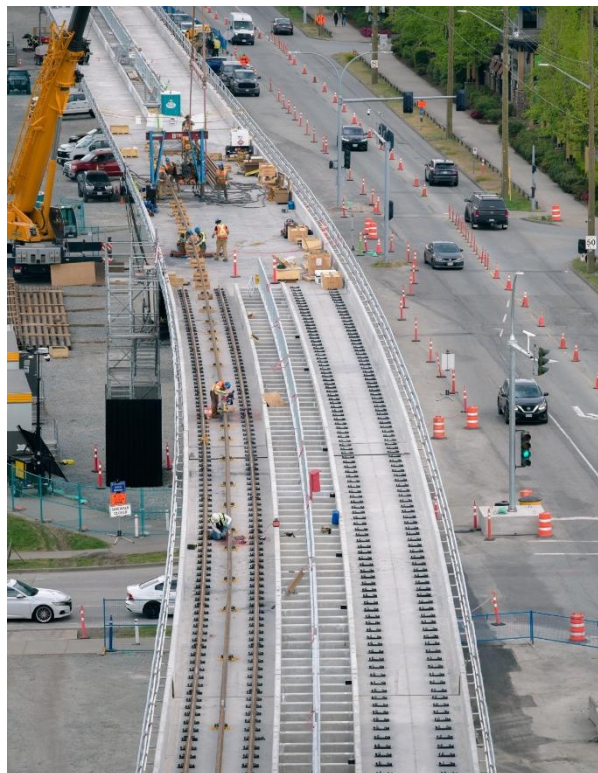
Preliminary trackwork at Bakerview-166 Street Station.



Workers welding together pieces of running rail.

Current activities (continued):

- Foundation work for columns will complete in mid-June. Column construction will follow, continuing throughout this section (164 Street to 184 Street).
- Installation of large guideway beams will take place over the Serpentine River and near the South of Fraser Maintenance and Storage Facility. Overnight single-lane alternating traffic is in effect, and traffic control personnel may pause traffic for up to one hour through late September to safely complete this work.
- The **Clayton Clipper** is travelling west towards Bakerview-166 Street Station.
- **Track installation** near 166 Street continues through June 2026, including rail delivery, lifting, installation, welding, grinding, and concrete pouring.



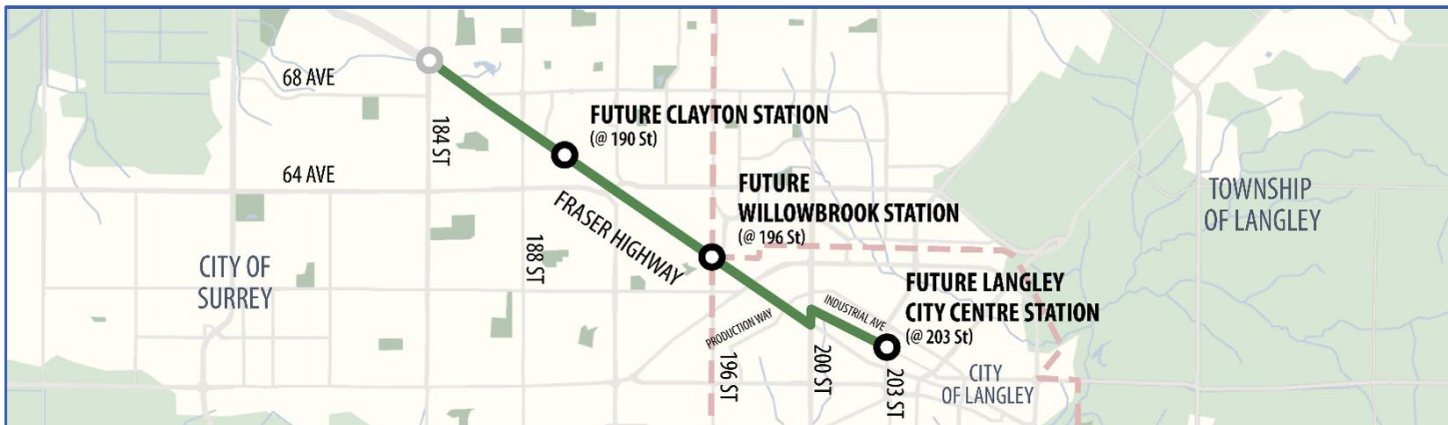
Rail installation on the guideway near 68 Avenue.

Future activities:

- **Track installation** will begin east of Highway 15 in August 2026. This includes delivering and installing rail onto the elevated guideway, welding, grinding, and concrete pours. Expect increased workers and equipment on the elevated guideway, and intermittent traffic stops during rail delivery.

Detailed traffic updates are included in our [Weekly Traffic Advisory](#), available on Fridays on our website. Timelines and work are subject to change.

East of 184 Street to 203 Street



Current activities:

- **Single lane traffic** on Fraser Highway. One lane remains open in each direction. Traffic shifts around work areas and across medians, which may restrict turn movements. Traffic control personnel may stop traffic for up to two minutes.
- **Eastbound traffic only on Industrial Avenue** between 200 Street and 203 Street.
- Guideway construction including **foundations and columns** along Fraser Highway between 64 Avenue and Highway 10.
- **Utility work** to prepare for roadway restoration on Fraser Highway. Temporary access changes are required when this work crosses intersections and driveways. Work will occur on Fraser Highway between 64 Avenue and 201A Street, Langlely Lane (laneway east of Highway 10), Industrial Avenue between 200 Street and 203 Street, and on 201A Street.
- At **Clayton Station**, mechanical, electrical and plumbing work will start in June 2026 and concourse and PPS construction will take place through summer 2026.
- Pile driving at **Willowbrook Station** finished in early June 2026. Station construction is now starting, including excavations and concrete pours.
- Construction at **Langley City Centre Station** is ongoing.
- The **Langley Launcher** has completed the guideway spans between Hillcrest-184 Street and Clayton stations and continues installing precast segments moving east towards Willowbrook Station.
- **Concrete guideway spans** above Industrial Avenue (near 203 Street) and across 203 Street were placed in May and June 2026. Construction on this portion of the elevated guideway is anticipated through early fall 2026.
- **Site preparation for guideway foundations and columns** including vegetation management, grading activities, and fence installation.
- **Langley City Centre PPS** construction at 201A Street and Industrial Avenue is ongoing. Work on the walls and roof starts in June 2026.
- **Pile driving** continues for the guideway in the laneway east of Highway 10 and on Industrial Avenue. Expect welding during overnight hours and work on Sundays and holidays on Industrial Avenue.

- **Track installation** near 68 Avenue continues through July 2026, and work at 188 Street and 189 Street continues through August 2026. This includes delivering and installing rail onto the elevated guideway, welding, grinding, and concrete pours. Expect increased workers and equipment on the elevated guideway, along with intermittent traffic stops during rail delivery.

Future activities:

- **Column construction** east of Highway 10 for the guideway will follow foundation work.

Detailed traffic updates are included in our [Weekly Traffic Advisory](#), available on Fridays on our website. Timelines and work are subject to change.



Rail installed on the guideway.



Construction at the Langley City Centre Station.



Guideway construction in the laneway east of Highway 10.

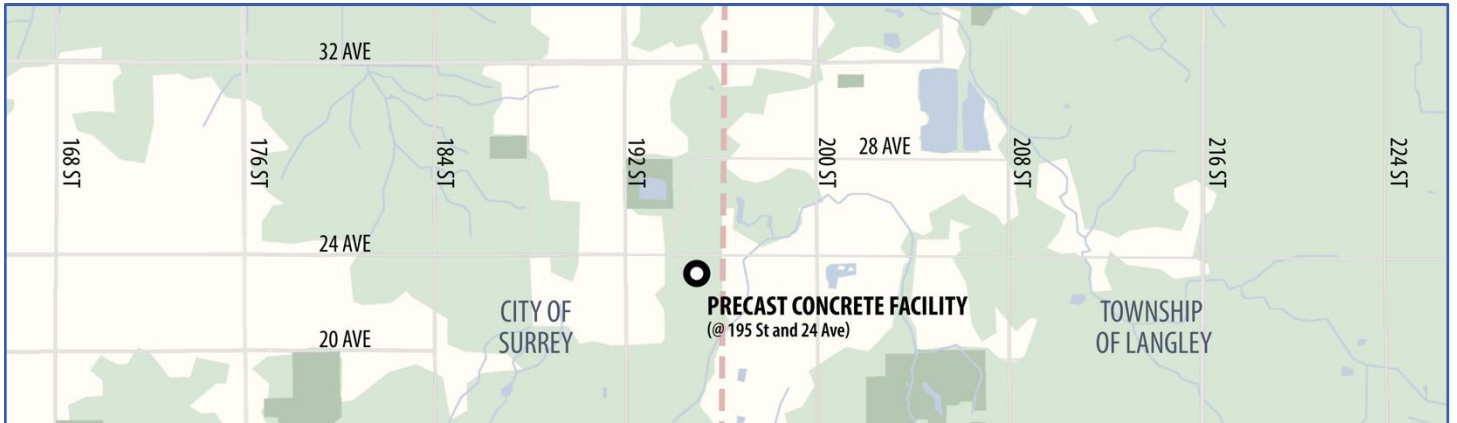


Station foundation piles at Willowbrook Station.



Lifting a guideway beam on Industrial Avenue.

Guideway Precast Concrete Facility



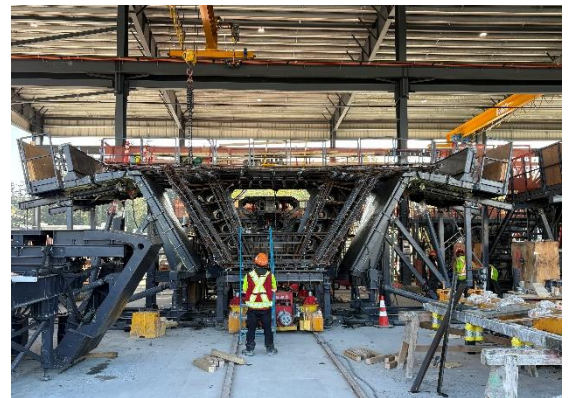
The concrete segments for the elevated guideway are being built at a SkyTrain precast concrete facility located at 195 Street and 24 Avenue in Surrey. The facility includes steel buildings, utility connections and a concrete plant.

Construction

- More than half of the 4,400 concrete segments have been produced.
- Guideway segments are being delivered by truck to supply the four launching gantries that lift and place them along the SkyTrain route.
- Segment deliveries and lifts may occur at night along the alignment to reduce disruption and access impacts.



Sunrise over the precast concrete facility.



A steel rebar cage positioned inside a guideway segment mold at the precast concrete facility.

Keep in touch

We appreciate your patience and understanding while we complete this important infrastructure project. If you have any questions or concerns, please contact us.

Website: surreylangleyskytrain.gov.bc.ca

Email: surreylangleyskytrain@gov.bc.ca

24/7 Information Line: 1-844-815-6111

 @SLSkyTrain  Surrey Langley SkyTrain

ਜ਼ਰੂਰੀ ਜਾਣਕਾਰੀ: ਕਿਰਪਾ ਕਰਕੇ ਇਸਦਾ ਅਨੁਵਾਦ ਕਰਵਾਓ

ज़रूरी जानकारी: कृपया इसका अनुवाद करवाएं

MAHALAGANG IMPORMASYON: Mangyaring isalin ito

重要資訊: 請找人為你翻譯

중요정보: 번역해주세요