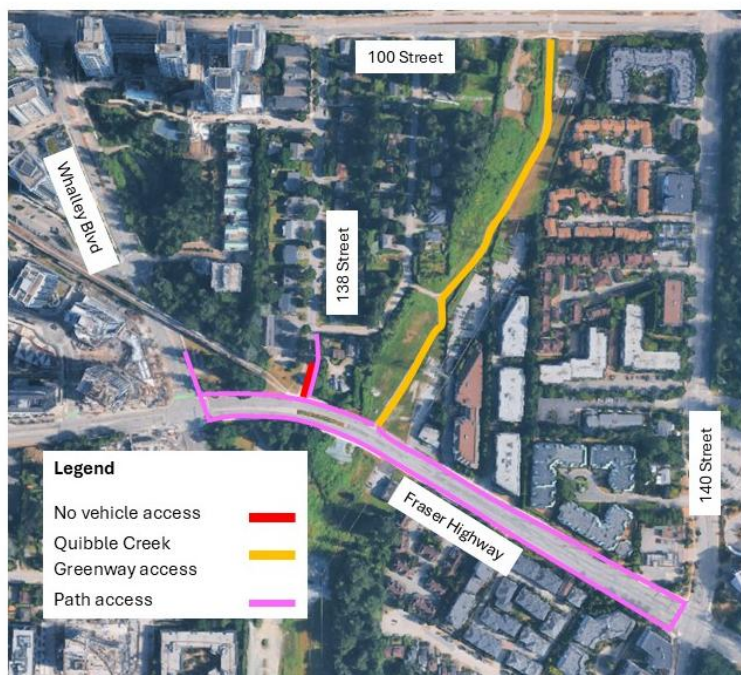




Traffic Update: Access change 138 Street north of Fraser Highway



Surrey Langley SkyTrain construction is underway, including column construction for the elevated guideway. To support this work, the following temporary traffic pattern change will be in effect 24/7 starting July 6, 2026 to September 30, 2026.

- No vehicle access to/from 138 Street and Fraser Highway.
- Cyclist and pedestrian access on both sides of Fraser Highway is available.
- Intermittent pathway stoppages for up to 15 minutes on the north side of Fraser Highway near 138 Street when equipment is in operation.
- The multi-use pathway on the south side of Fraser Highway will remain open and is the recommended route through the area, including to King George Station. Access via Whalley Boulevard or 140 Street.

Map: Access around 138 Street and Fraser Highway

What to Expect



Timing

In effect July 6, 2026 to September 30, 2026.



Hours of Work

Monday to Saturday, from 7 a.m. to 10 p.m. No vehicle access to/from 138 Street 24/7.



Traffic

No vehicle access to/from 138 Street and Fraser Highway.



Impacts/Interruptions

Intermittent pedestrian stoppages. Allow for extra time to navigate the area.

Contact

Website: surreylangleyskytrain.gov.bc.ca

Email: surreylangleyskytrain@gov.bc.ca

24/7 Information Line: 1-844-815-6111

Thank you for your cooperation and understanding.

ਜ਼ਰੂਰੀ ਜਾਣਕਾਰੀ: ਕਿਰਪਾ ਕਰਕੇ ਇਸਦਾ ਅਨੁਵਾਦ ਕਰਵਾਓ
 ज़रूरी जानकारी: कृपया इसका अनुवाद करवाएं
 MAHALAGANG IMPORMASYON: Mangyaring isalin ito
 重要資訊: 請找人為你翻譯
 중요정보: 번역해주세요