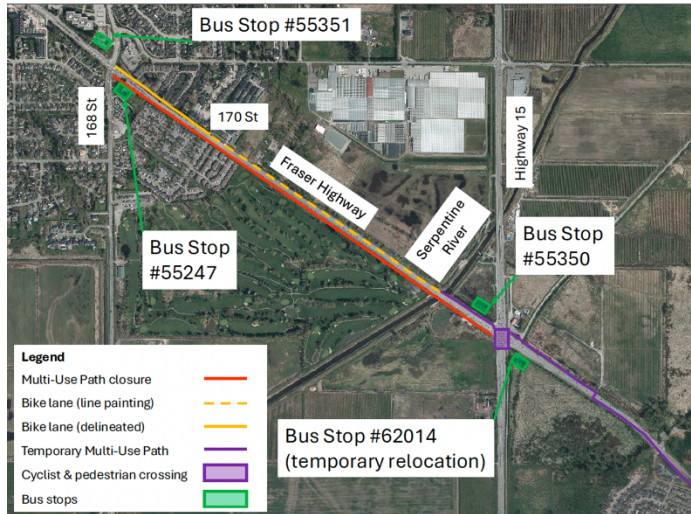


UPDATED: Multi-Use Path Closure from 168 Street to Highway 15

This is an update to the [notice](#) distributed on May 23, 2025, that reflects modifications within the corridor to separate cyclist and vehicle traffic.

Construction for the Surrey Langley SkyTrain is underway. Activities include foundation construction, consisting of pile driving, pier construction, utility relocations, installation of new utilities to power the SkyTrain, and road works.



Map: Multi-Use Path closure along Fraser Highway between 168 Street and Highway 15.

Eastbound Fraser Highway bus stop #62014 at Highway 15 and westbound Fraser Highway bus stop #55351 at 168 Street will remain open. **Bus stop #62014 is temporarily relocated to the east side of Highway 15 until early October 2025.** Please refer to TransLink signage and their website ([TransLink.ca](https://www.translink.ca)) for information about bus service.

To accommodate construction activities along Fraser Highway, a multi-use path closure is in effect until January 2026, with modifications:

- Between 168 Street and Highway 15, an **eastbound cycling lane is now available**. As work progresses through the area, portions of the multi-use path may be periodically opened to eastbound cyclists only. Temporary stoppages may be required depending on equipment movements or noise levels.
- The existing “share the lane” traffic pattern has been removed from westbound Fraser Highway. From the Serpentine River bridge to 170 Street, a westbound cycling lane is available. This lane is physically separated from vehicle traffic between 170 Street and 168 Street.
- Single-use transit passes will continue to be available for those who prefer to take a bus through the area.
- A delineated pedestrian pathway is available when buses are not operating.
- The speed limit is reduced to 30km/h in both directions through the area.
- A temporary multi-use path east of Highway 15 remains available. This path is on the north side of Fraser Highway until approximately 400m east of Highway 15, where it crosses to the south side at the temporary traffic signal.

Contact

surreylangleyskytrain@gov.bc.ca

[surreylangleyskytrain.ca](https://www.surreylangleyskytrain.ca)

24/7 Info Line: 1-844-815-6111

ਜ਼ਰੂਰੀ ਜਾਣਕਾਰੀ: ਕਿਰਪਾ ਕਰਕੇ ਇਸਦਾ ਅਨੁਵਾਦ ਕਰਵਾਓ
ਜ਼ਰੂਰੀ ਜਾਣਕਾਰੀ: कृपया इसका अनुवाद करवाएं

MAHALAGANG IMPORMASYON: Mangyaring isalin ito

重要資訊: 請找人為你翻譯

중요정보: 번역해주세요

Thank you for your cooperation and understanding



What to Expect



Timing

In effect through January 2026.



Hours of Work

Monday to Saturday from 7 a.m. to 10 p.m.
Sundays, Holiday, and night time work may occur.
Work hours are subject to change. Traffic patterns
in effect 24/7



Traffic

No multi-use path access along Fraser
Highway between 168 Street and Highway
15.



Impacts/Interruptions

The travelling public can expect delays while in the
area. Temporary increases in noise are anticipated
while work is taking place.

Contact

surreylangleyskytrain@gov.bc.ca

surreylangleyskytrain.ca

24/7 Info Line: 1-844-815-6111

ਜ਼ਰੂਰੀ ਜਾਣਕਾਰੀ: ਕਿਰਪਾ ਕਰਕੇ ਇਸਦਾ ਅਨੁਵਾਦ ਕਰਵਾਓ

ज़रूरी जानकारी: कृपया इसका अनुवाद करवाएं

MAHALAGANG IMPORMASYON: Mangyaring isalin ito

重要資訊: 請找人為你翻譯

중요정보: 번역해주세요

Thank you for your cooperation and understanding