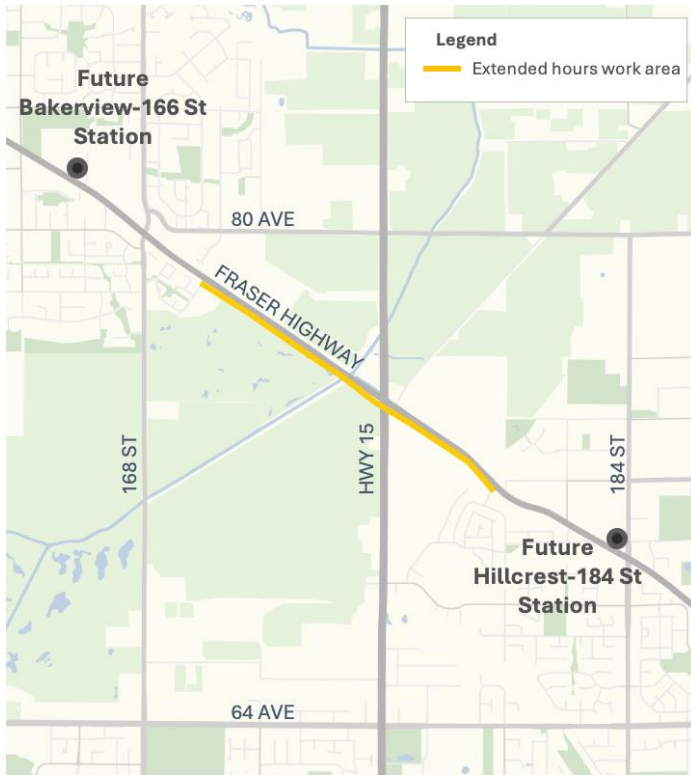




Extended hours on Fraser Highway between 170 Street to 180 Street



Map: Construction requires extended hours along Fraser Highway between 170 Street and 180 Street.

Construction of the Surrey Langley SkyTrain Project is underway. Activities in this area include foundation construction, using driven and vibratory methods, rebar installation and concrete work. These activities are expected to continue through March 2026 and require extended hours, including overnight work, and work on Sundays and Holidays on an intermittent basis:

- Activities occurring during extended hours of work will include welding, setting rebar cages, and pouring concrete.
- Foundation construction may also take place during extended hours only using vibratory methods, which are quieter, and only in areas not in direct proximity to residences.
- Pile driving will only occur during regular construction hours.
- Noise levels will be monitored. Mitigations will be in place to reduce equipment use and direct lighting away from residences.

What to Expect



Timing

In effect September 26, 2025, through March 2026.



Hours of Work

Regular hours 7 a.m. to 10 p.m., Monday to Saturday. Extended hours include Sunday, Holiday and overnight work.



Traffic

Activities to take place within existing work zones, follow directions from traffic control.



Impacts/Interruptions

Increased noise and vibration are expected. Mitigations in place to manage noise and light.

Contact

Website: surreyangleyskytrain.gov.bc.ca

Email: surreyangleyskytrain@gov.bc.ca

24/7 Information Line: 1-844-815-6111

ਜ਼ਰੂਰੀ ਜਾਣਕਾਰੀ: ਕਿਰਪਾ ਕਰਕੇ ਇਸਦਾ ਅਨੁਵਾਦ ਕਰਵਾਓ

ਜ਼ਰੂਰੀ ਜਾਨਕਾਰੀ: ਕृਪਯਾ ਇਸਕਾ ਅਨੁਵਾਦ ਕਰਵਾਓ

MAHALAGANG IMPORMASYON: Mangyaring isalin ito