

About this newsletter

Construction of the Surrey Langley SkyTrain Project is underway. This transformative project will provide affordable, reliable transportation for people in Surrey, Langley and across Metro Vancouver. Neighbours and the travelling public can expect construction activity and traffic pattern changes throughout the project corridor through 2029.

This newsletter provides an overview of project activities from August 2025 – October 2025.

This work is subject to change. Please visit surrey-langley-skytrain.ca for the most accurate information and to sign up for traffic and construction updates.

BC Hydro activities are anticipated through summer 2025. Updates about their work can be found at bchydro.com/skytrain

For more detailed traffic information, please refer to our Weekly Traffic Advisory.

Construction hours

Construction hours across the project are 7 a.m. to 10 p.m. Monday to Saturday with most construction activities being completed by 8 p.m.

Some activities may be required outside of regular work hours during lower traffic volumes, to reduce impacts to businesses or to accommodate concrete pours.

We will provide notice to surrounding residents and businesses with details when longer hours are required.

Key activities

Construction activities include the following:



Roadworks including median and sidewalk removal, road widening to accommodate construction, changes to intersections and traffic patterns.



Utility relocation which involves moving aerial and underground utilities to make way for construction activities and equipment.



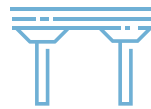
Utility installation for the system that will power the future SkyTrain. This involves excavation and trenches on the road.



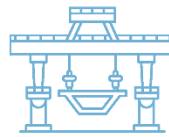
Propulsion Power Substation (PPS) construction for the system that will power the future SkyTrain. This involves excavation, foundations and structure installation. Most PPS are located within station areas. There are three stand-alone PPS at 96 Avenue, Highway 15 and 201 Street.



Station foundation construction including drilling and pile driving, and testing is required at each station location to support the future station structures.



Guideway construction will include site preparation, foundation drilling or pile driving, rebar installation, and concrete work. Foundations will be built using either drilling or pile driving. Once complete, formwork will be installed, and concrete will be poured to form the piers.



Four launching gantries will begin building the elevated guideway along the Surrey Langley SkyTrain (SLS) alignment. A launching gantry is a large, specialized lifting machine used to lift precast concrete segments into place.

Impacts

The following impacts can be anticipated throughout construction:



Businesses: Access to businesses will be maintained throughout construction with signs placed to direct road users.



Vibration: There may be an increase in vibration near construction activities, including from equipment movement and foundation construction. Vibration levels are monitored.



Traffic: Road users can expect single lane traffic in each direction, lane closures, stoppages, and closures from 138 Street in Surrey to 203 Street in Langley.



Pedestrians: Will be rerouted around construction areas. Use caution and follow signs. Crosswalk closures may be in effect.



Cyclists: Cyclists may be asked to detour, re-route to multi-use paths, share the lane, or dismount, depending on construction activity.



Transit: Bus stops may be moved or closed in construction areas. Please refer to TransLink signs and their website.



Noise: An increase in noise from construction activities is expected. Pile driving for foundation construction will temporarily increase noise levels. Noise levels are monitored and will be reduced as much as possible.

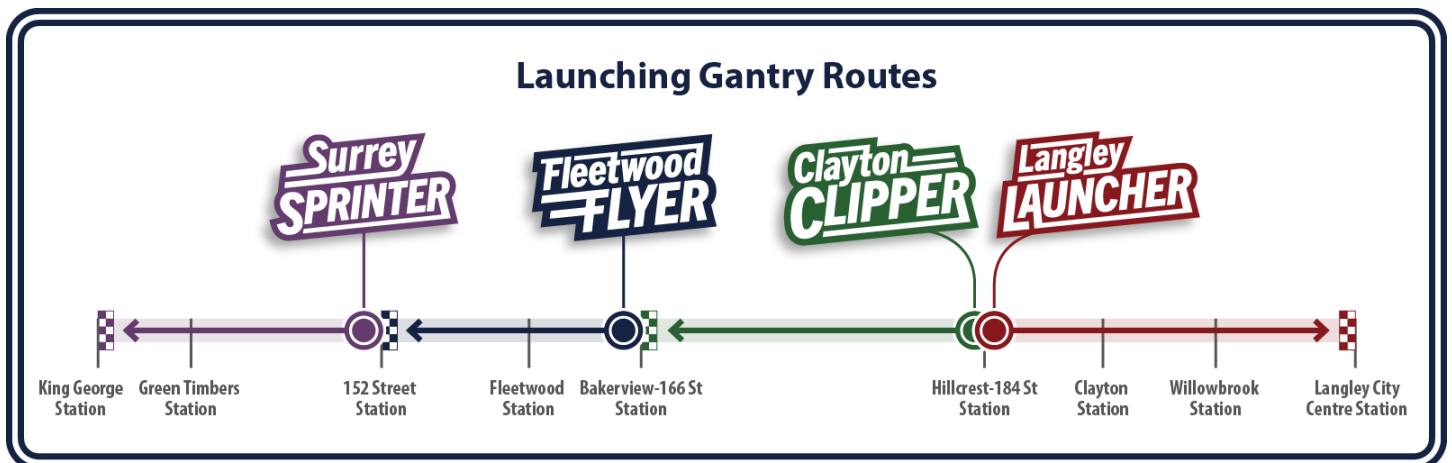
Launching Gantries

Learn about the specialized lifting machines building the elevated guideway.



Four launching gantries will build the elevated guideway along the Surrey Langley SkyTrain (SLS) alignment. A launching gantry is a large, specialized lifting machine used to lift precast concrete segments into place. More than 4,400 precast concrete guideway segments, each weighing around 28 tonnes, will be installed by the gantries along the 16-kilometre Expo Line extension. Each launching gantry is more than 100 metres long and weighs over 440 tonnes.

The machines have been given names that reflect the communities where they will be working. The first launching gantry went into operation in July 2025.

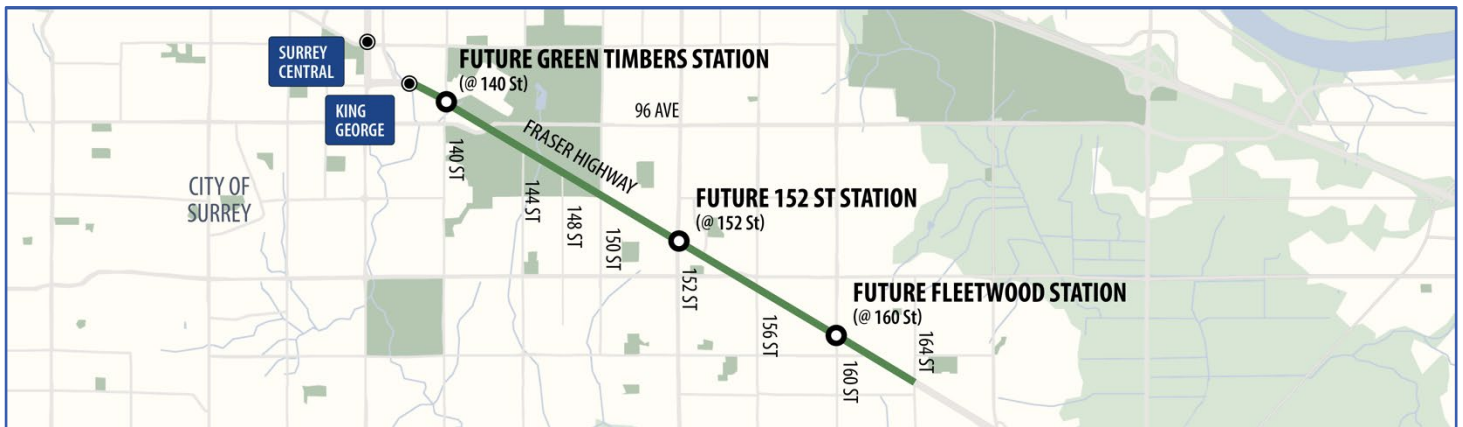


Construction overview

The following pages provide an overview of current and upcoming construction activities from August 2025 through October 2025 for each project area.

Activities and timelines are subject to change. We will continue to provide specific updates and encourage everyone to sign up for updates at surreylangleystrainskytrain.ca/notifications.

138 Street to 164 Street



Current activities:

- **Single lane traffic** on Fraser Highway. One lane remains open in each direction, traffic is shifted around work areas and across medians and may result in restricted turn movements. Temporary stoppages by traffic control personnel, up to two minutes may be required.
- Single-lane traffic at the Fraser Highway and 140 Street intersection. The northbound lane on 140 Street is closed through this intersection. This closure will remain in place until the station is complete in 2028.
- **Utility work** to make way for future stations and SkyTrain structures and to install utilities on both sides of Fraser Highway. Temporary access changes and turning restrictions are required when this work crosses intersections and driveways. Crews will be working between 138 Street and 164 Street.
- **A full road closure** is in place on Fraser Highway between 140 Street and 96 Avenue until late October 2025 to build the **Green Timbers Station**.
- **Site preparation for the guideway** along the entire alignment, including vegetation management, grading activities, and fence installation.
- **Guideway construction including foundation and pier work** between 140 Street and 164 Street. This activity will continue with equipment relocating throughout the area. Traffic pattern changes, including for pedestrians and cyclists, are required to accommodate this work.
- One of the four launching gantries – the **Surrey Sprinter** – will be assembled at the future 152 Street Station site.
- **Green Timbers** PPS construction.



Station construction at the future Green Timbers Station.



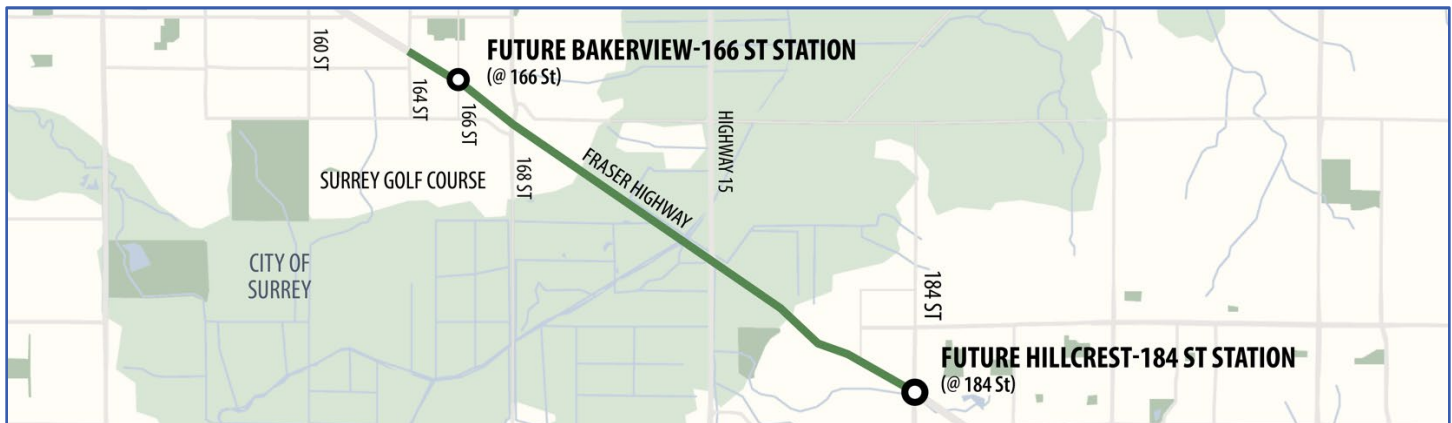
Launching gantry being assembled at 152 Street Station.

Future activities:

- **Station foundation construction** is anticipated to begin at the future Fleetwood Station in August 2025.
- Once assembled, the **Surrey Sprinter** begins its work and will lift and install precast concrete guideway segments at 152 Street Station and move west toward King George Station.

Detailed traffic updates are included in our [Weekly Traffic Advisory](#), available on Fridays on our website. Timelines and work are subject to change.

East of 164 Street to 184 Street



Current activities:

- **Single lane traffic** on Fraser Highway. One lane remains open in each direction, traffic is shifted around work areas and across medians and may result in restricted turn movements. Temporary stoppages by traffic control personnel, up to two minutes may be required.
- **Utility work** to make way for future SkyTrain structures and install utilities on both sides of Fraser Highway. Temporary access changes and turning restrictions will be required while this work crosses intersections and driveways. Some overnight work will be required.
- **Site preparation for the guideway** along the entire alignment, including vegetation management, grading activities, and fence installation.
- **Guideway construction, including foundation and pier work, will take place along this corridor between 164 Street and 184 Street.** Pile driving is required on both sides of Highway 15, which is anticipated to increase noise levels in this area.
- The launching gantry – **the Fleetwood Flyer** – is lifting and installing precast segments and working west towards 152 Street.
- Launching gantry assembly at **Hillcrest-184 Street Station**. This location will have two launching gantries – **the Clayton Clipper and Langley Launcher**. One will travel west towards **Bakerview 166-Street Station** and the other will move east towards **Langley City Centre Station**.
- **Pacific Highway PPS** (176 Street and Fraser Highway) construction.



Rebar cage installation as part of foundation construction near Fraser Highway and Highway 15.



Assembly of the "Fleetwood Flyer" launching gantry at Bakerview-166 Street Station.

Future activities:

- The Fleetwood Flyer launching gantry is expected to lift and install precast segments from 164 Street heading west towards 152 Street Station.

Detailed traffic updates are included in our [Weekly Traffic Advisory](#), available on Fridays on our website. Timelines and work are subject to change.



Launching gantry parts at Hillcrest-184 Street Station.



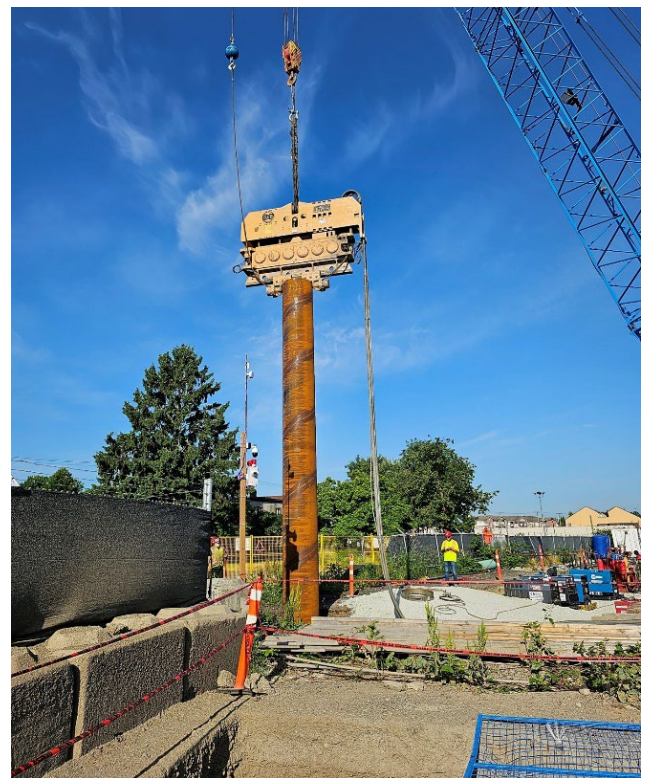
The Fleetwood Flyer lifting guideway segments.

East of 184 Street to 203 Street



Current activities:

- **Single lane traffic** on Fraser Highway. One lane remains open in each direction, traffic is shifted around work areas and across medians and may result in restricted turn movements. Temporary stoppages by traffic control personnel, up to two minutes may be required.
- **Eastbound traffic only on Industrial Avenue** between 201A Street and 203 Street.
- **Guideway construction including foundation and piers** along Fraser Highway between 184 Street and Highway 10.
- **Utility work** to make way for future stations and SkyTrain structures and to install utilities on both sides of Fraser Highway and around **Langley City Centre Station**. Temporary access changes will be required when this work crosses intersections and driveways. Work will occur along Fraser Highway between 64 Avenue and 200 Street, Langley Lane (east of Highway 10) and Industrial Avenue between 200 Street and 203 Street.
- The launching gantry – **Langley Launcher** – is expected to lift and install precast segments east of 184 Street to 68 Avenue.



Foundation construction at Langley City Centre Station with a vibratory hammer.

Current activities:

- **Station construction** at Clayton Station and Langley City Centre Station started at Clayton Station in late May 2025. Pile driving started in Langley City Centre Station in June 2025 and will continue into summer 2025 for foundation construction.
- **Roadworks** to allow for SkyTrain construction and to maintain a single lane of traffic in each direction between 64 Avenue and Highway 10.
- **Site preparation for foundations and piers** along the entire alignment, including vegetation management, grading activities and fence installation.



Foundation construction at the future Clayton Station.

Future activities:

- The launching gantry – **Langley Launcher** – is expected to lift and install precast segments from 68 Avenue moving east to continue to 203 Avenue in coming months.
- **Langley City Centre PPS (201A Street and Industrial Avenue) construction** starting summer 2025.

Detailed traffic updates are included in our Weekly Traffic Advisory, available on Fridays on our website. Timelines and work are subject to change.

Guideway Precast Concrete Facility



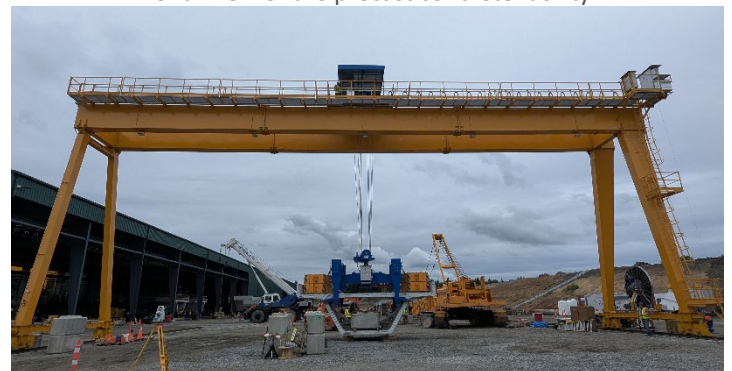
The concrete segments for the elevated guideway will be built at a SkyTrain precast concrete facility located at 195 Street and 24 Avenue in Surrey. The facility includes steel buildings, utility connections and a concrete plant. SkyLink Guideway Partners* (SkyLink) is leading the planning, permitting, construction and operation of the facility. SkyLink has applied for and received a noise by-law variance from the City of Surrey. This allows for work to start at 6 a.m.



Aerial view of the precast concrete facility.

Construction

- Construction of the steel building is now complete.
- The first concrete segment for the guideway was poured in April 2025. More than 4,400 concrete segments will be made at this facility by summer 2027.
- The guideway segments will start arriving by trucks to supply the four launching gantries on the SkyTrain route, which are purpose-built machines to lift and place the guideway segments.



Storage gantry that will be used to lift and move completed concrete segments from the production building to the storage area.

Keep in touch

We appreciate your patience and understanding while we complete this important infrastructure project. If you have any questions or concerns, please contact us.

Website: surreylangleyskytrain.gov.bc.ca

Email: surreylangleyskytrain@gov.bc.ca

24/7 Information Line: 1-844-815-6111



@SLSkyTrain



Surrey Langley SkyTrain

ਜ਼ਰੂਰੀ ਜਾਣਕਾਰੀ: ਕਿਰਪਾ ਕਰਕੇ ਇਸਦਾ ਅਨੁਵਾਦ ਕਰਵਾਓ

ਜ਼ਰੂਰੀ ਜਾਣਕਾਰੀ: ਕੁਪਯਾ ਇਸਕਾ ਅਨੁਵਾਦ ਕਰਵਾਓ

MAHALAGANG IMPORMASYON: Mangyaring isalin ito

重要資訊: 請找人為你翻譯

중요정보: 번역해주세요