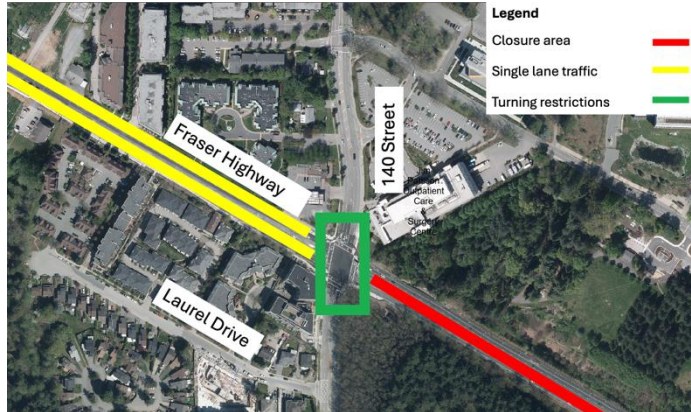


Traffic Update: 140 Street and Fraser Highway

Construction for the Surrey Langley SkyTrain is underway, including the installation of new utilities to power the future SkyTrain and station construction.



Map: Traffic pattern changes at 140 Street and Fraser Highway.

To support utility work through the intersection, the following traffic pattern changes will be in effect from 7 p.m. to 7 a.m. starting July 14, 2025, for approximately two weeks:

- Turning restrictions on both 140 Street and Fraser Highway.
- Access to Fraser Highway westbound via 140 Street southbound will be available throughout this work.
- Drivers may wish to plan alternate routes.
- Access for emergency responders will be maintained at all times.

Please refer to TransLink signage and their website ([TransLink.ca](https://www.translink.ca)) for the latest information about bus service in this area.

For more details about the [full road closure](#) on Fraser Highway between 140 Street and 96 Avenue and [night work](#) in the area, please visit our website.

What to Expect



Timing

Utility work: in effect overnight July 14, 2025, for approximately two weeks.



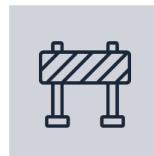
Hours of Work

Utility work: 7 p.m. to 7 a.m.
Regular construction activities: 7 a.m. to 10 p.m.
Monday to Saturday.



Traffic

Overnight turning restrictions. Signage and traffic control personnel will be on site to direct vehicles and pedestrians as needed.



Impacts/Interruptions

The travelling public can expect delays while in the area. Temporary increases in noise are anticipated.

Contact

surreylangleyskytrain@gov.bc.ca

[surreylangleyskytrain.ca](https://www.surreylangleyskytrain.ca)

24/7 Info Line: 1-844-815-6111

ਜ਼ਰੂਰੀ ਜਾਣਕਾਰੀ: ਕਿਰਪਾ ਕਰਕੇ ਇਸਦਾ ਅਨੁਵਾਦ ਕਰਵਾਓ
ਜ਼ਰੂਰੀ ਜਾਣਕਾਰੀ: कृपया इसका अनुवाद करवाएं

MAHALAGANG IMPORMASYON: Mangyaring isalin ito

重要資訊: 請找人為你翻譯

중요정보: 번역해주세요

Thank you for your cooperation and understanding