

About this newsletter

Construction of the Surrey Langley SkyTrain Project is underway. This transformative project will provide affordable, reliable transportation for people in Surrey, Langley and across Metro Vancouver. Neighbours and the travelling public can expect construction activity and traffic pattern changes throughout the project corridor through 2029.

This newsletter provides an overview of project activities from May 2025 – July 2025.

This work is subject to change. Please visit surrey-langley-skytrain.ca for the most accurate information and to sign up for traffic and construction updates.

BC Hydro activities are anticipated through spring 2025. Updates about their work can be found at bchydro.com/skytrain

Construction hours

Construction hours across the project are 7 a.m. to 10 p.m. Monday to Saturday with most construction activities being completed by 8 p.m.

Some activities may be required outside of regular work hours during lower traffic volumes, to reduce impacts to businesses or to accommodate concrete pours.

We will provide notice to surrounding residents and businesses with details when longer hours are required.

Key activities

Construction activities include the following:



Roadworks including median and sidewalk removal, road widening to accommodate construction, changes to intersections and traffic patterns.



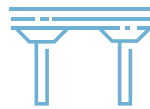
Utility relocation which involves moving aerial and underground utilities to make way for construction activities and equipment.



Utility installation for the system that will power the future SkyTrain. This involves excavation and trenches on the road.



Station foundation construction including drilling and pile driving, and testing is required at each station location to support the future station structures.



Guideway construction including site preparation, foundation drilling, pile driving, rebar and concrete installation. Drilling or pile driving will be used for the foundations. Then formwork is installed and concrete is poured to create the piers, specialized gantry launching cranes will install the guideway segments.

Impacts

The following impacts can be anticipated throughout construction:



Businesses: Access to businesses will be maintained throughout construction, signs will be in place to direct road users.



Vibration: There may be an increase of vibration near construction activities including from equipment movement and foundation construction. Vibration levels are monitored.



Traffic: Road users can expect single lane traffic in each direction, lane closures, stoppages, and closures from 138 St in Surrey to 203 St in Langley.



Pedestrians: Will be re-routed around construction areas. Use caution and follow signs. Crosswalk closures may be in effect.



Cyclists: Cyclists may be asked to detour, re-route to multi-use paths, share the lane, or to dismount, depending on construction activity.



Transit: Bus stops may be moved or closed in construction areas, please refer to TransLink signs and their website.



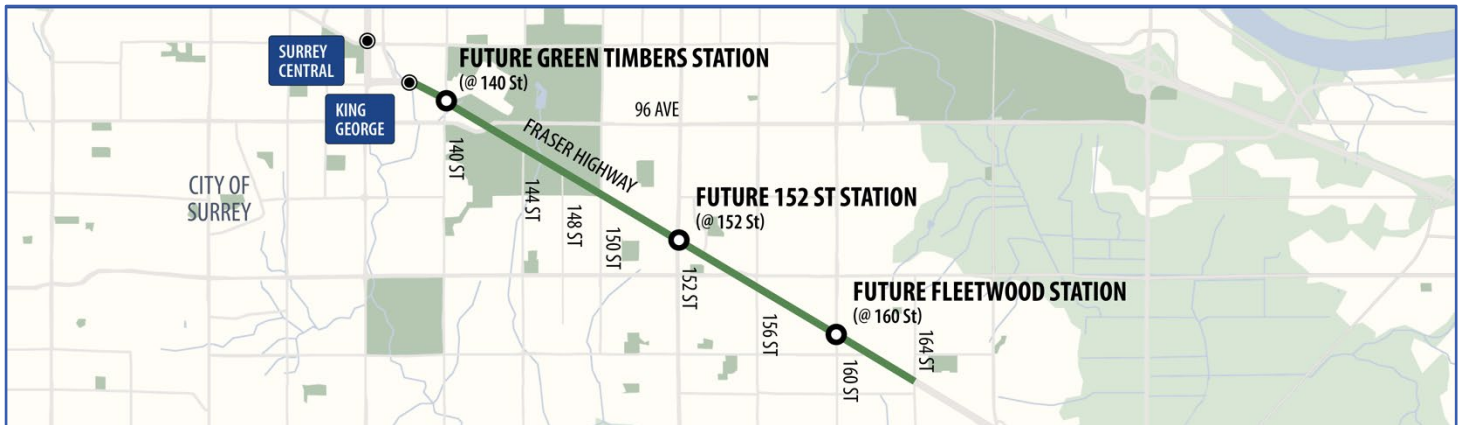
Noise: An increase of noise from construction activities is expected. Pile driving for foundation construction will temporarily increase noise levels. Noise levels are monitored and will be reduced as much as possible.

Construction overview

The following pages provide an overview of current and upcoming construction activities from May 2025 through July 2025 for each project area.

Activities and timelines are subject to change. We will continue to provide specific updates and encourage everyone to sign up for updates at surreylangleyskytrain.ca/notifications.

138 Street to 164 Street



Current activities:

- **Single lane traffic** on Fraser Highway. One lane remains open in each direction, traffic is shifted around work areas and across medians and may result in restricted turn movements. Temporary stoppages by traffic control personnel, up to two minutes may be required.
- **Utility work** to make way for future stations and SkyTrain structures and install utilities on both sides of Fraser Highway. Temporary access changes and turning restrictions are required when this work crosses intersections and driveways. Crews will be working between 140 Street and 164 Street.
- **A full road closure** is in place on Fraser Highway between 140 Street and 96 Avenue until late October 2025 to build the **Green Timbers Station**.
- **Site preparation for the guideway** along the entire alignment, including vegetation management, grading activities, and fence installation.
- **Guideway construction** at the station sites, including at Green Timbers Station, 152 Street Station, and Fleetwood Station. This activity will continue with and equipment relocating from the station sites to adjacent properties. Traffic pattern changes, including for pedestrian and cyclists, are required to accommodate this work.



Guideway pier installation underway at 152 Street Station.



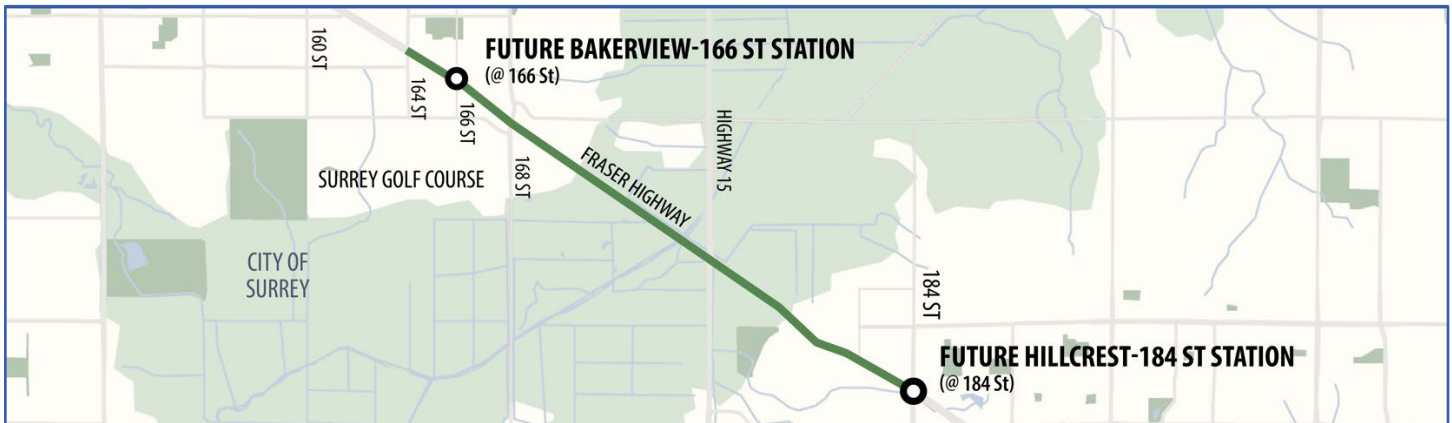
Guideway pier cap construction underway at Bakerview-166 Street Station.

Future activities:

- **Station foundation construction** is anticipated to begin at the future Green Timbers Station in mid-May.
- **One of the four gantry launchers** — large overhead cranes used to construct the guideway — will be assembled at the future 152 Street Station site. It will lift and install concrete segments.

Detailed traffic updates are included in our [Weekly Traffic Advisory](#), available on Fridays on our website. Timelines and work are subject to change.

East of 164 Street to 184 Street



Current activities:

- **Single lane traffic** on Fraser Highway. One lane remains open in each direction, traffic is shifted around work areas and across medians and may result in restricted turn movements. Temporary stoppages by traffic control personnel, up to two minutes may be required.
- **Utility work** to make way for future stations and SkyTrain structures and install utilities on both sides of Fraser Highway. Temporary access changes and turning restrictions will be required while this work crosses intersections and driveways. Some overnight work will be required.
- **Site preparation for the guideway** along the entire alignment, including vegetation management, grading activities, and fence installation.
- **Guideway construction** at the station sites, including at Bakerview-166 Street Station, east and west of Highway 15 and Hillcrest-184 Street Station. Pile driving is required on both sides of Highway 15, which is anticipated to increase noise levels in this area.
- Construction at **Bakerview-166 Street Station** and **Hillcrest-184 Street Station** is progressing, with piers and connecting pieces being constructed at each site. Construction of the guideway will be moving off of these station sites and to adjacent areas.



Foundation construction, including drilled piles, is ongoing at Bakerview- 166 Street Station.

Future activities:

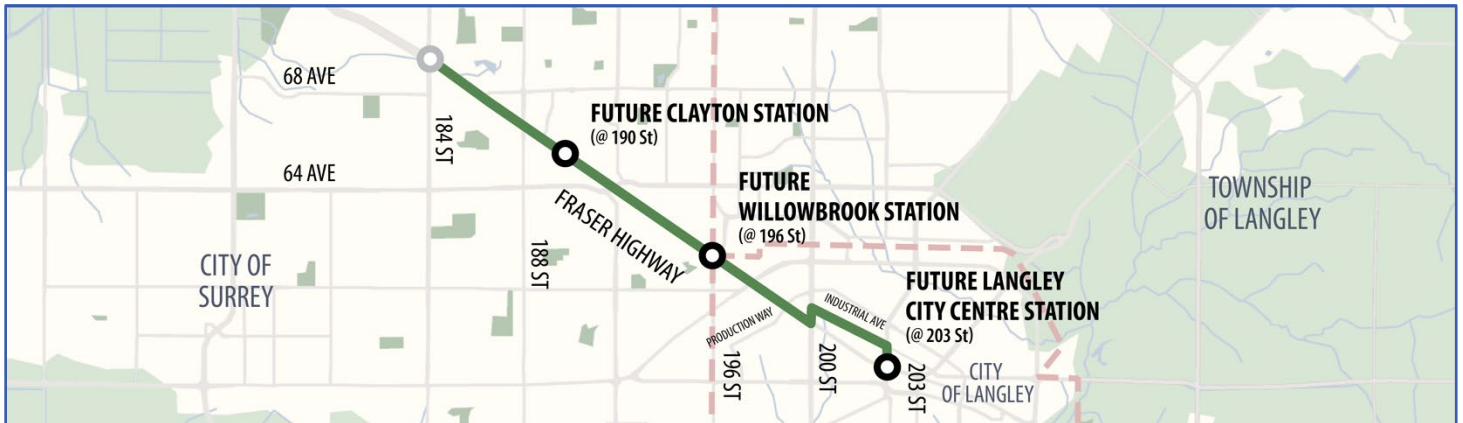
- **One of the four gantry launchers** — large overhead cranes used to construct the guideway — will be assembled at Bakerview-166 Street Station. From this location, the gantry will lift and install pre-cast concrete segments as it progresses westbound, connecting to the Guideway at 152 Street.
- **Two of the four gantry launchers** will be assembled at 184 Street Station. One will move west and connect with the guideway at Bakerview- 166 Street. The other will move east and end its journey at 203 Street in Langley.

Detailed traffic updates are included in our [Weekly Traffic Advisory](#), available on Fridays on our website. Timelines and work are subject to change.



Utility work on Fraser Highway near 181 Street.

East of 184 Street to 203 Street



Current activities:

- **Single lane traffic** on Fraser Highway. One lane remains open in each direction, traffic is shifted around work areas and across medians and may result in restricted turn movements. Temporary stoppages by traffic control personnel, up to two minutes may be required.
- **Guideway construction** along Fraser Highway, with work moving east and west from 184 Street.
- **Utility work** to make way for future stations and SkyTrain structures and install utilities on both sides of Fraser Highway and around **Langley City Centre Station**. Temporary access changes will be required when this work crosses intersections and driveways. Work will occur between 184 Street and 64 Avenue.
- **Road widening** to allow for SkyTrain construction and to maintain a single lane of traffic in each direction between 196 Street and Highway 10.
- **Site preparation for foundations and piers** along the entire alignment, including vegetation management, grading activities and fence installation.

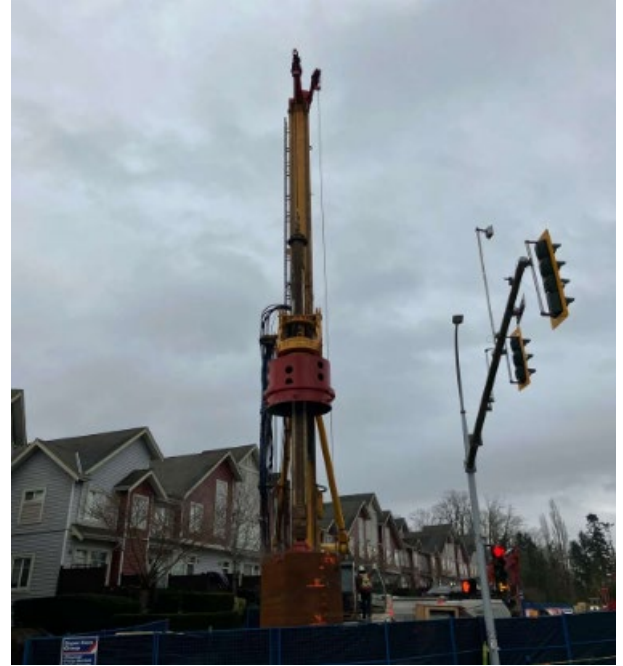


Utility work near 184 Street.

Future activities:

- **Station foundation construction** at **Clayton Station** with pile driving anticipated to start mid-May 2025.
- **Site preparation** and **guideway foundation construction** at **Willowbrook Station** including installing fencing, grading and a new access for Willowbrook Mall just east of the existing Fraser Highway entrance.
- **Pile driving** will start at **Langley City Centre Station** in June 2025 and continue into summer 2025 for foundation construction.

Detailed traffic updates are included in our [Weekly Traffic Advisory](#), available on Fridays on our website. Timelines and work are subject to change.



Guideway foundation construction using drilled piles at 184 Street.

Guideway Precast Concrete Facility



The concrete segments for the elevated guideway will be built at a SkyTrain precast concrete facility located at 195 Street and 24 Avenue in Surrey. The facility includes steel buildings, utility connections and a concrete plant. SkyLink Guideway Partners* (SkyLink) is leading the planning, permitting, construction and operation of the facility. SkyLink has applied for and received a noise by-law variance from the City of Surrey. This allows for work to start at 6 a.m.

Construction

- Construction of the steel building is now complete.
- The first concrete segment that will form the guideway was poured in April 2025. More than 4,400 concrete segments will be made at this facility by summer 2027.
- The guideway segments will start arriving by trucks to supply the four gantry launchers on the SkyTrain route, which are purpose-built cranes to lift and place the guideway segments.



Work within the steel building to assemble one of the molds for the guideway.



The installation of the steel building has been completed.

Keep in touch

We appreciate your patience and understanding while we complete this important infrastructure project. If you have any questions or concerns, please contact us.

Website: surreylangleyskytrain.gov.bc.ca

Email: surreylangleyskytrain@gov.bc.ca

24/7 Information Line: 1-844-815-6111

 @SLSkyTrain  Surrey Langley SkyTrain

ਜ਼ਰੂਰੀ ਜਾਣਕਾਰੀ: ਕਿਰਪਾ ਕਰਕੇ ਇਸਦਾ ਅਨੁਵਾਦ ਕਰਵਾਓ

ਜ਼ਰੂਰੀ ਜਾਣਕਾਰੀ: ਕੁਪਯਾ ਇਸਕਾ ਅਨੁਵਾਦ ਕਰਵਾਓ

MAHALAGANG IMPORMASYON: Mangyaring isalin ito

重要資訊: 請找人為你翻譯

중요정보: 번역해주세요