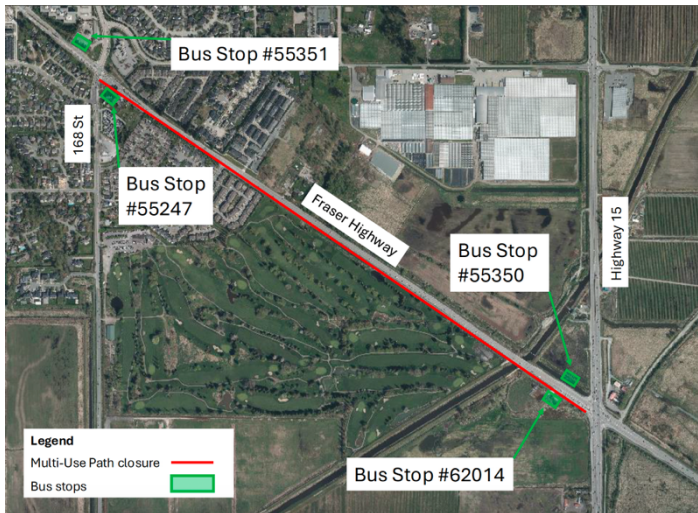


## Construction Update: Multi-Use Path Closure from 168 Street to Highway 15

Construction for the Surrey Langley SkyTrain is underway. Activities include foundation construction, consisting of pile driving, pier construction, utility relocations, installation of new utilities to power the SkyTrain and road works.



Map: Multi-Use Path closure along Fraser Highway between 168 Street and Highway 15.

Eastbound Fraser Highway **bus stop #62014** at Highway 15 and westbound Fraser Highway **bus stop #55351** at 168 Street will remain open. Please refer to TransLink signage and their website (TransLink.ca) for information about bus service.

To accommodate construction activities along Fraser Highway, a multi-use path closure will be in effect from June 2, 2025, until spring 2026:

- Closure of the multi-use path on the south side of Fraser Highway between 168 Street and Highway 15.
- **Multi-use path users will take the bus to travel through this area.** Eastbound users can board at **stop #55247** at 168 Street, westbound users can board at **stop #55350** at Highway 15.
- SkyLink, the contractor in this area, will provide single-use transit passes for travel within this area. Request a bus pass from Traffic Control Personnel located near each bus stop before boarding.
- A delineated pathway will be available when buses are not operating.
- Cyclists will share the lane with vehicle traffic on Fraser Highway in this area.

## What to Expect



### Timing

In effect through spring 2026.



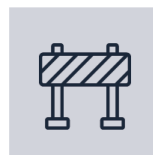
### Traffic

No multi-use path access along Fraser Highway between 168 Street and Highway 15. Cyclists to share the lane.



### Hours of Work

Monday to Saturday from 7 a.m. to 10 p.m.  
Sundays and Holidays through June 2025 7 a.m. to 5 p.m. Work hours are subject to change. Traffic patterns in effect 24/7



### Impacts/Interruptions

The travelling public can expect delays while in the area. Temporary increases in noise are anticipated while work is taking place.

## Contact

[surreylangleyskytrain@gov.bc.ca](mailto:surreylangleyskytrain@gov.bc.ca)

[surreylangleyskytrain.ca](http://surreylangleyskytrain.ca)

24/7 Info Line: 1-844-815-6111

ਜ਼ਰੂਰੀ ਜਾਣਕਾਰੀ: ਕਿਰਪਾ ਕਰਕੇ ਇਸਦਾ ਅਨੁਵਾਦ ਕਰਵਾਓ  
ਜ਼ਰੂਰੀ ਜਾਨਕਾਰੀ: कृपया इसका अनुवाद करवाएं

MAHALAGANG IMPORMASYON: Mangyaring isalin ito

重要資訊: 請找人為你翻譯

중요정보: 번역해주세요

**Thank you for your cooperation and understanding**