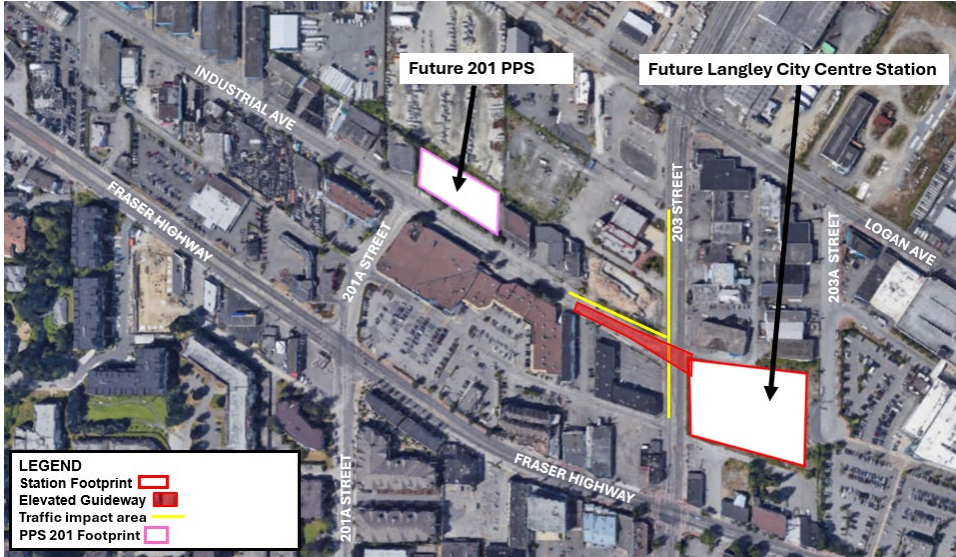


Station and Guideway Construction Underway at Langley City Centre Station



Map: Fraser Highway and 203 Street. Approximate station and guideway areas. Construction schedules, including dates and times, are subject to change.

Construction of the Surrey Langley SkyTrain is progressing, with work beginning at the new Langley City Centre Station site on 203 Street and Industrial Avenue, for the elevated guideway* on Industrial Avenue and at the Propulsion Power Substation** at 201 Street.

Construction Activities

Station foundation construction, including pile driving, will begin June 2 within the station footprint and occur for approximately three months, until the end of August

2025. Driven pile installation involves the use of large mobile cranes and a drill rig. An increase in noise and vibration is anticipated during this work.

Locations of Work

Pile driving and concrete construction will move to 203 Street and Industrial Avenue in July 2025 to support the construction of the elevated guideway. Completion of pile driving for the station and this portion of the guideway is anticipated at the end of August 2025 and construction of the concrete piers will follow. Crews will also complete utility work and build the Propulsion Power Substation (201 Street and Industrial Avenue). This work requires traffic pattern changes on Industrial Avenue and 203 Street, including parking restrictions. More details will be shared in future updates.

*An elevated guideway is a raised track that supports the SkyTrain as it travels above ground.

**A Propulsion Power Substation supplies electrical power to the SkyTrain system.

Contact

surreylangleyskytrain@gov.bc.ca

surreylangleyskytrain.ca

24/7 Construction Line: 1-844-815-6111

ਜ਼ਰੂਰੀ ਜਾਣਕਾਰੀ: ਕਿਰਪਾ ਕਰਕੇ ਇਸਦਾ ਅਨੁਵਾਦ ਕਰਵਾਓ

ज़रूरी जानकारी: कृपया इसका अनुवाद करवाएं

MAHALAGANG IMPORMASYON: Mangyaring isalin ito

重要資訊: 請找人為你翻譯

중요정보: 번역해주세요

Thank you for your cooperation and understanding



What to Expect



Timing

Pile driving activities are expected to take place from June 2 to the end of August 2025. Elevated guideway concrete work is expected to take place from July 2025 to September 2026.



Hours of Work

Monday to Saturday from 7 a.m. to 10 p.m.
Pile driving activities will occur until 5 p.m.



Traffic

Temporary traffic impacts will be shared in future updates. Traffic pattern changes on Industrial Avenue and 203 Street and at intersections.



Impacts/Interruptions

Temporary increases in noise and vibration are anticipated during pile driving activities
Monitoring for noise and vibration will be in place while work is underway.

Contact

surreylangleyskytrain@gov.bc.ca

surreylangleyskytrain.ca

24/7 Construction Line: 1-844-815-6111

ਜ਼ਰੂਰੀ ਜਾਣਕਾਰੀ: ਕਿਰਪਾ ਕਰਕੇ ਇਸਦਾ ਅਨੁਵਾਦ ਕਰਵਾਓ

ज़रूरी जानकारी: कृपया इसका अनुवाद करवाएं

MAHALAGANG IMPORMASYON: Mangyaring isalin ito

重要資訊: 請找人為你翻譯

중요정보: 번역해주세요

Thank you for your cooperation and understanding