



**Surrey Langley
SkyTrain**



transportation
investment
corporation

Monthly Status Report

Reporting Period: January 2025

1. Introduction

1.1. Project Overview

The Surrey Langley SkyTrain Project (the Project) will extend the Expo Line 16 kilometres on an elevated guideway from King George SkyTrain Station in Surrey to 203 Street in Langley City primarily along the Fraser Highway. The Project includes eight new stations (listed west to east):

- **Green Timbers Station:** Located (at 140 St. and Fraser Highway) adjacent to the Green Timbers Urban Forest and the Jim Pattison Outpatient Care and Surgery Centre and near the BC RCMP’s E Division Headquarters, this station will serve those who live, work, and recreate in the area. The station - with as small a footprint as possible - was designed to minimize impacts on surrounding treed areas and local aquatic and fisheries sources.
- **152 Street Station:** Located (at 152 St. and Fraser Highway) at the intersection of this heavily used north-south and east-west corridor that connects people travelling between South Surrey/ White Rock, Guildford, Langley, Surrey Centre, and beyond, this station will provide better connectivity to the growing business and residential community. This area in West Fleetwood, served by numerous small and medium sized commercial businesses, is slated for further growth and development.
- **Fleetwood Station:** Located in the heart of Fleetwood Town Centre (at 160 St. and Fraser Highway), the area surrounding this station is characterized by residential neighborhoods, a community centre with library and gym facilities, and a plethora of local retail, service, and commercial outfits.
- **Bakerview-166 Street Station:** Located in east Fleetwood (at 166 St. and Fraser Highway) adjacent to the bustling Surrey Sports and Leisure Complex, this station and transit exchange will serve the growing residential area.
- **Hillcrest-184 Street Station:** Located in west Clayton (at 184 St. and Fraser Highway), this station will serve a growing community through implementation of the City of Surrey’s Clayton Corridor Plan.
- **Clayton Station:** Located in east Clayton (at 189 St. and Fraser Highway), this station will also serve the growing community. The two stations in Clayton will be linked not only by SkyTrain, but by multi-use pathways that will traverse the Hillcrest Village and Clayton Crossing shopping plazas.
- **Willowbrook Station:** Located at Willowbrook Mall (196 St. and Fraser Highway), this station will feature a transit exchange to facilitate ridership from the Township of Langley and Cloverdale, and to accommodate the redevelopment of the surrounding area.
- **Langley City Centre Station:** This station (203 St. and Industrial Ave) is the catalyst for a major revitalization of the area. It will help to foster a vibrant, thriving transit-oriented neighbourhood in Langley City Centre, supported by the SkyTrain extension and a bus exchange that will connect residents and visitors to the rest of Metro Vancouver.

The Project also includes new fully separated multi-use pathways for people to walk, bike, or roll to stations, and bike racks and enclosed bike parking at each station.

The Project is the catalyst for transit-oriented development (TOD) around new SkyTrain stations and bus exchanges. TOD will help to foster greener, more livable communities through opportunities for more housing, services, jobs, retail and commercial enterprises, and public amenities in local neighbourhoods.

Additionally, the project includes 30 new SkyTrain cars, and funding toward initial planning, development, and advance works for a Maintenance and Storage Facility to store and service SkyTrain vehicles. Once in-service, the Project will fully integrate into the region's existing SkyTrain network, which TransLink operates and maintains.

Additional information about the Project can be found on the Surrey Langley SkyTrain [website](#).

1.2. Project Delivery

Transportation Investment Corporation (TI Corp), a Provincial Crown Corporation, is delivering and overseeing this \$5.996 billion Project on behalf of the Ministry of Transportation and Transit.

The Project is comprised of three contracts:

Guideway Contract

- This contract is to design, build, and finance the elevated guideway and associated roadworks, utilities, and active transportation elements.
- SkyLink Guideway Partners, which is comprised of Dragados Canada, Inc., Ledcor Investments Inc., and Ledcor Mining Ltd. is the Guideway contractor.

Stations Contract

- This contract is to design and build eight new stations for the project, including three transit exchanges and cycling and walking paths around the new stations.
- South Fraser Station Partners, which is comprised of Aecon Constructors, a division of Aecon Construction Group Inc., Acciona Infrastructure Canada Inc., and Pomerleau BC Inc. is the Stations contractor.

Systems and Trackwork Contract

- This contract is to design and build the systems and trackwork.
- Transit Integrators BC, which is comprised of AtkinsRéalis Major Projects Inc., AtkinsRéalis Canada Inc., and Western Pacific Enterprises Ltd., is the Systems and Trackwork contractor.

Early works started in spring 2024, including pre-construction site surveys, locating utilities, geotechnical investigations, and design work. This work complements the advance work by BC Hydro to relocate power lines along Fraser Highway, underway since early 2024.

Major construction started in November 2024, and the anticipated in-service date is late 2029.

1.3. Project Goals

Key benefits of the Project include:

- Encouraging and creating opportunities for sustainable and livable communities;
- Improving transit service by increasing capacity, reducing travel times, increasing reliability, and providing better user experience and comfort;
- Increasing sustainable mode share by shifting automobile trips to transit trips;
- Improving regional accessibility and promoting social and community cohesion by connecting local communities through rapid transit – providing access to more housing, employment, education, businesses, community facilities, and services;
- Encouraging long-term economic growth by improving access to employment and educational opportunities, creating new jobs, improving efficiency for businesses to get goods to market, supporting urban agglomeration and densification, increasing businesses' access to the region's labour force, and driving innovation by an increase in competition among firms;
- Encouraging physical activity, improving air quality, and providing better access to health services; and
- Providing a clean and resilient mode of transportation that improves the environment by reducing ghg emissions through reductions in vehicle kilometers travelled, replacing diesel bus service with electric SkyTrain service, reducing congestion-related idling, and reducing the need for roadway expansion.

2. Project Dashboard

		Objectives	Project Status	Comments
Project Delivery	Scope	Deliver Project's approved scope.	●	<ul style="list-style-type: none"> – Project scope includes delivery of 16km of elevated guideway along Fraser Highway from King George Station on the Expo Line through to Langley City Centre. Includes eight above ground stations, thirty new SkyTrain vehicles, and new fully separated active transportation paths to support travel to and from new stations and connect communities. – The Project scope has been confirmed and will be delivered accordingly.
	Schedule	Deliver Project within approved schedule with operations to commence in late 2029.	●	<ul style="list-style-type: none"> – Revised schedule announced August 15, 2024. The extension is expected to go into service in late 2029.
	Budget	Deliver Project within approved budget of \$5.99 billion.	●	<ul style="list-style-type: none"> – Project spending for the month of January 2025 was \$68.9 million. – Total Project spending to date is \$981.8 million; the Project is forecast to be delivered within budget. – Federal recoveries to date total \$306.3 million. Other recoveries to date total \$7.0 million.
	Safety	Ensure that Project work is performed safely, in compliance with all applicable safety regulations, and in accordance with government policy.	●	<ul style="list-style-type: none"> – There have been zero (0) lost time injuries on the Project to date. – Lost Time Injury Frequency Rate (LTIFR) for the Project remains at zero (0) which is less than the WorkSafeBC 2023 rate of 2.4* for Heavy Construction. <p><i>*Injury rate data reflects Large Employer 100+ Person Years employer size.</i></p>
	Quality	Implement an effective Quality Management System.	●	<ul style="list-style-type: none"> – Project contractors continued with the submission of work methods and Inspection and Test Plans (ITP). – On-site quality testing is underway. – The Project Team continues to review monthly quality reports, ITPs, and Non-Conformance Reports (NCR).

	Environmental	Ensure Project work is performed in an environmentally responsible manner.	●	<ul style="list-style-type: none"> – Permits are in place for the Project, as listed in Section 3: Project Documents and Achievements to Date. Additional regulatory permit amendments are being reviewed as submitted to the Project Team. – The Project Team is reviewing required environmental work plans as they become available to support the progress of construction. – The Project Team continues to review weekly and monthly environmental monitoring reports as submitted. – Environmental monitoring of construction activities is ongoing. – The Project Team is supporting contractors by providing archaeological monitors for works in areas of archaeological sensitivity in accordance with the project's Heritage Conservation Act permit.
	Property Acquisition	Acquire and manage properties required to deliver the Project.	●	<ul style="list-style-type: none"> – The Project Team is working to acquire properties to meet the construction schedule.
	Design and Construction	Develop design and construction specifications and related technical studies for the Project, review design and construction compliance to the Project Agreement and manage activities on site.	●	<ul style="list-style-type: none"> – Design and Construction technical requirements are included in the Project Agreement (PA) developed for Guideways, Stations and Systems. – As scheduled, the Project Contractors' designs are in progress. – Final designs and Issue for Construction (IFC) drawings for some of the guideway early works have been completed for the construction of permanent works. – Construction continued at 152 Street, Bakerview-166 Street, and Hillcrest-184 Street stations for pile foundations of guideway piers. – Construction started at Fleetwood Station.
	Labour Model	Implement the Project Labour Agreement (PLA) labour approach.	●	<ul style="list-style-type: none"> – The Surrey Langley SkyTrain Project Labour Agreement has been executed. – Implementation is ongoing.
Partners/ Stakeholders	First Nations	Continue to build and maintain positive collaborative working relationships with First Nations.	●	<ul style="list-style-type: none"> – Ongoing consultation with First Nations to confirm potential impacts to their rights and interests and help inform drafting the accommodation agreements.
	Third Parties	Continue to build and maintain positive relationships with Project Partners and other third parties.	●	<ul style="list-style-type: none"> – Ongoing regular communication with: <ul style="list-style-type: none"> ○ City of Surrey ○ Township of Langley ○ City of Langley – Continued liaising closely with TransLink and subsidiaries to complete the review for the design submissions and discuss technical design items.

				<ul style="list-style-type: none"> – Ongoing monthly working groups to facilitate collaboration and reporting. – Continued communication with the municipalities on the station designs as part of the Design Advisory Process.
	Public and Stakeholder Engagement	Continue to build and maintain positive relationships with communities and other stakeholders.	●	<ul style="list-style-type: none"> – Ongoing community and stakeholder engagement through a number of mechanisms, including email, phone calls, and in-person meetings and events.

Status	Description
●	Managing critical issues, negotiating resolution; action required immediately
●	Managing some issues, negotiating resolution; action required in the near term
●	Managing day to day operations

3. Project Documents and Achievements to Date

Project Delivery	Project Planning and Development	<ul style="list-style-type: none"> – Surrey Langley SkyTrain Project - Resource Library - Province of British Columbia (gov.bc.ca) – SLS Project Business Case (2022) – Service Delivery Option Analysis (2022) – Capital Cost Memo (2022) – Economic Analysis (2022) – Ridership Memo (2022) – Procurement Options (2022) – Project Risk Report (2022) – Level of Private Finance Memo (2022) – Market Sounding Report (2022) – Operating Cost Memo (2022)
	Environmental	<ul style="list-style-type: none"> – Obtained a Water Sustainability Act approval for the initial phase of construction (2024) – Obtained Letter of Advice from Fisheries and Oceans Canada confirming Fisheries Act Authorization is not required for SLS (2023) – Environmental Screening Review – Volume 1 – Technical ESR Sections (2023) – Environmental Screening Review – Volume 2 – Appendices (2023) – Construction Environmental Management Plan Framework (2023) – Environmental Screening Review Summary Report (2022) – Environmental Screening Review Updated Terms of Reference (2022) – Environmental Screening Review Summary Report (2020) – Environmental Screening Review Final Terms of Reference (2020) – Environmental Screening Review Draft Terms of Reference (2019) – Environmental Screening Review Process Summary (2019)
	Design and Construction	<ul style="list-style-type: none"> – Reference Concept Design – Final Track Alignment Design Drawings and Issue for Construction Drawings – Subsurface Utility Engineering Report – Serpentine River Dike Geotechnical Investigation Report
Partners/ Stakeholders	Owner / Other Works	<ul style="list-style-type: none"> – City of Surrey – Road widening of Fraser Highway between 140 and 148 streets – BC Hydro - Transmission Line Relocations – BC Hydro - Distribution Line Relocations (in progress) – Various communication line work, e.g. Telus
	Labour	<ul style="list-style-type: none"> – Project Labour Agreement – Project Labour Agreement Contractor(s) Letter of Adherences
	First Nations	<ul style="list-style-type: none"> – Capacity agreements – Matsqui First Nation Accommodation Agreement
	Third Parties	<ul style="list-style-type: none"> – City of Surrey: <ul style="list-style-type: none"> ○ Municipal Agreement (2023) ○ Fraser Highway Agreement (2023)

		<ul style="list-style-type: none"> ○ 152 Street Station Overpass Agreement (2023) - Township of Langley: <ul style="list-style-type: none"> ○ Municipal Agreement (2023) - City of Langley: <ul style="list-style-type: none"> ○ Municipal Agreement (2024) - TransLink Funding and Support Agreement (2024) - Metro Vancouver Accommodation Agreement (2023) - CP Rail Overpass-Grade Separation Construction Agreement (2024)
	<p>Public and Stakeholder Engagement</p>	<ul style="list-style-type: none"> - Public Engagement Boards - November to December 2024 - Public Engagement Summary Report - June to June 2024 - Public Engagement Boards – June to June 2024 - Public Engagement Summary Report – May to June 2022 - Public Engagement Boards – May to June 2022

4. Monthly Highlights and Three Month Lookahead

4.1. Safety

Scope:	<ul style="list-style-type: none"> – Establish Project Occupational Health and Safety (OH&S) plans. – Manage Project OH&S activities. – Monitor relevant OH&S performance metrics. – Ensure the Project complies with relevant WorkSafeBC regulations and government requirements. – Identify specific health and safety roles and responsibilities. – Outline relevant health and safety management processes and activities.
Monthly Highlights:	<ul style="list-style-type: none"> – Completed five (5) site inspections with Guideway Contractor at various locations. – 10 incidents were documented in the health and safety log for the month. None of the incidents resulted in a Lost Time Injury. The Lost Time Injury Frequency Rate (LTIFR) for the Project is zero (0) which is less than the WorkSafeBC 2023 rate of 2.4* for Heavy Construction. <p><i>*Injury rate data reflects Large Employer 100+ Person Years employer size.</i></p>
Three Month Lookahead:	<ul style="list-style-type: none"> – Continue to monitor relevant OH&S requirements during the early Project stages. – Continue to provide owner health and safety oversight during construction. – Implementation of the Project Health and Safety Management Plan.

4.2. Quality

Scope:	<ul style="list-style-type: none"> – Establish quality management Project objectives and performance measures. – Review and monitor Project quality management activities. – Conduct Quality Management surveillance audits of the Project work. – Monitor the Project contractors’ audits. – Monitor the Project contractors’ Non-Conformity Tracking System. – Identify and implement continuous improvement initiatives.
Monthly Highlights:	<ul style="list-style-type: none"> – The Project contractors continued performing internal and external audits and on-site quality testing. – Guideway and Stations contractors continued developing relevant inspection and test plans, as needed. – Guideway contractor continued on-site quality testing with foundation construction. – Guideway and Stations contractors initiated 13 Non-Conformity Reports (NCR) this month, related to construction. To date, there have been a total of 38 NCRs, with 23 closed and 15 open. – The Project Team reviewed numerous ITP submissions and managed NCR resolutions.
Three Month Lookahead:	<ul style="list-style-type: none"> – Undertake and/or witness quality audits as per plans. – Witness and perform on-site verification testing. – Continue reviewing the quality document submissions, as needed.

4.3. Environmental

Scope:	<ul style="list-style-type: none"> – Establish and manage environmental plans. – Liaise with regulators and stakeholders on commitments made through the environmental permitting and public engagement processes. – Manage outstanding environmental permits and associated environmental, monitoring, and compliance processes.
Monthly Highlights:	<ul style="list-style-type: none"> – The Project Team approved the Guideway contractor's revised Construction Environmental Management Plan and Environmental Quality Management Plan. – The Project Team reviewed and commented on the Stations contractor's Construction Environmental Management Plan (CEMP). – The Project Team reviewed and accepted the Guideway contractor's Vibration Impact Assessment and Monitoring and Mitigation Plan specific to Jim Pattison Outpatient Centre and Surgery Centre. – The Project Team received and reviewed amendments to the Project's Water Sustainability Act permit by the Guideway contractor. – The Project Team initiated a review of the Archaeological Overview Assessment and, working with First Nations and the provincial Archaeology Branch, secured revisions to designated areas of potential. – Supported permit review for Guideway's Dike Maintenance Act Permit. – The Project Team reviewed and commented on both Guideway and Stations contractors' Noise Impact Assessment.
Three Month Lookahead:	<ul style="list-style-type: none"> – Complete the review of Stations contractor's Construction Environmental Management plans. – Complete the review of both Guideway and Stations contractors' Noise Impact Assessment and Noise and Vibration Management Plan. – Continue to review the environmental work plans for upcoming works submitted by the Guideway and Stations contractors, as needed. – Obtain Water Sustainability Act permit amendments for construction of SLS as needed by the Contractors with future amendments to the Project WSA permit anticipated in the Green Timbers Urban Forest and Hillcrest-184 Street Station areas. – Facilitate engagement strategies on key Guideway contractor permits including Dike Maintenance Act. – Continued archaeological monitoring for works conducted throughout the Project lands, by both Stations and Guideway contractors, where needed. – Weekly site visits to confirm appropriate implementation of the Construction Environmental Management Plan (CEMP) and Environmental Work Plans (EWP).

4.4. Design and Construction

Scope:	<ul style="list-style-type: none"> – Review and oversee compliance with the design and construction requirements of the Project Agreements, including undertaking reviews and audits, on-site monitoring, and other engagement with the Project contractors, as needed.
Monthly Highlights:	<ul style="list-style-type: none"> – Ongoing review of the interim design submissions from Guideway and Stations contractors as well as some final design submissions of early works. – Updated the station designs drawings to reflect the design development in the Design Advisory Process as part of interim design submissions. – Finalized the management plans and conceptual design review submissions from Systems contractor.

	<ul style="list-style-type: none"> – Continued with the subsurface investigations along the alignment, including stations. 98% progress achieved to date. – Advanced the precast concrete facility preparation where guideway segments will be fabricated and stored. Grading work continued on south section of the yard. Erection of casting building structural steel continued with 80% completed as of this month. Roof and side cladding of the casting building started at the north section of the building and is 20% complete. – Foundation construction started at the Fleetwood Station location. – Foundation construction continued at 152 Street Station, Bakerview-166 Street Station, and Hillcrest-184 Street Station locations. Guideway foundation piles continued, and the guideway pier construction is underway. – Continued with utility relocations. – Continued with the underground duct bank construction .
Three Month Lookahead:	<ul style="list-style-type: none"> – Review design submittals from Project contractors. – Procure foundation piles, gantries, and molds. – Monitor precast concrete facility set-up. – Continue with utility relocates for Guideway and Stations work. – Continue with piling works for Guideway. – Start construction of pile caps. – Start construction of columns. – Finalize Subsurface Investigation Program (SIP). – Start casting guideway segments. – Prepare for road closure on Fraser Highway between 140 Street and 96 Avenue from April 1, 2025 till end of October 2025.

4.5. First Nations

Scope:	<ul style="list-style-type: none"> – Consultation and engagement with First Nations on the Project design, logistics, permitting, archaeology program, environmental plans, economic development opportunities, cultural awareness and recognition, and construction monitoring.
Monthly Highlights:	<ul style="list-style-type: none"> – Continued engagement with First Nations on opportunities for participation on SLS. – Continued engagement on environmental plans, archaeology, and permitting. – Continued conversations with Tsawwassen, Semiahmoo and Katzie on Impact benefit negotiations. – Continued cultural recognition discussions with interested First Nations. – Continued collaboration with Indigenous Coordinators to share information and resolve issues. – Confirmed preferred station opportunities with interested First Nations for cultural recognition program.
Three Month Lookahead:	<ul style="list-style-type: none"> – Consult with First Nations on Construction Environmental Management Plans. – Continue negotiations on impact benefit agreements. – Engage with interested First Nations on station design components. – Monitor the Project contractor's implementation of the Indigenous Participation plans.

4.6. Third Parties

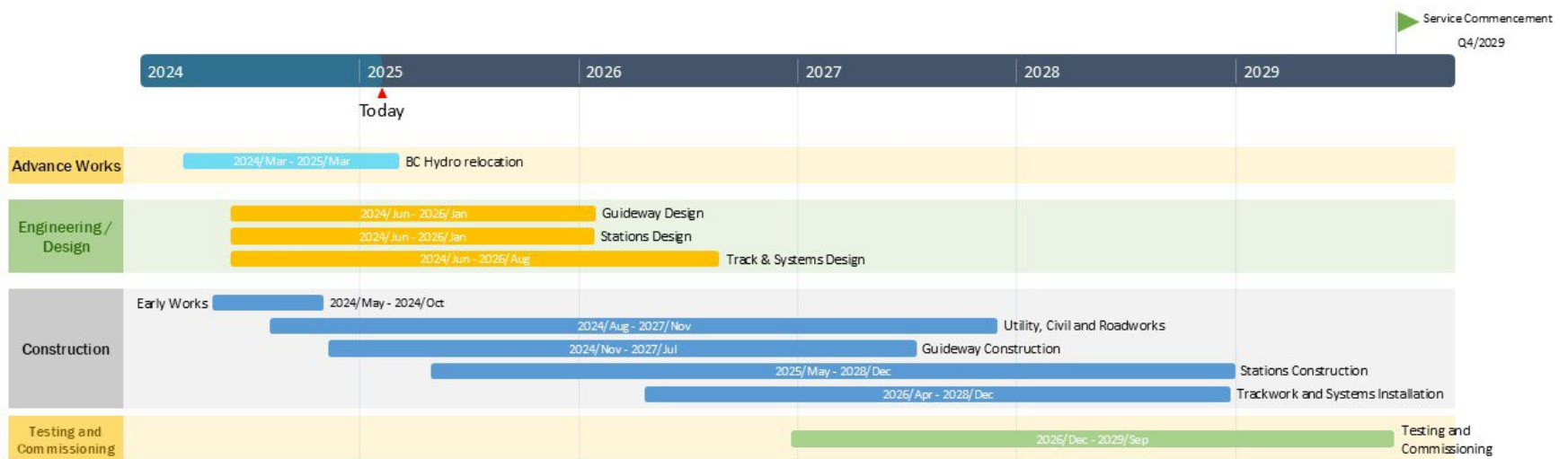
Scope:	<ul style="list-style-type: none"> – Project-specific Municipal Agreements (MA) with the City of Surrey, the City of Langley and the Township of Langley. – TransLink Funding and Support Agreement. – Engagement with the municipalities and TransLink on construction impacts, public and stakeholder queries, design submissions, and other inputs to the Project. – Coordination with BC Hydro on system upgrades, relocating distribution lines and poles and installing underground ducts.
Monthly Highlights:	<p>City of Surrey:</p> <ul style="list-style-type: none"> – Ongoing meetings between the Project Team and City staff. <p>Township of Langley:</p> <ul style="list-style-type: none"> – Ongoing meetings between the Project Team and Township staff. <p>City of Langley:</p> <ul style="list-style-type: none"> – Ongoing meetings between the Project Team and City staff. <p>Utilities:</p> <ul style="list-style-type: none"> – Conducted regular coordination meetings with BC Hydro on system upgrades and relocations.
Three Month Lookahead:	<ul style="list-style-type: none"> – Monitor and support BC Hydro’s progress on system upgrades and relocations.

4.7. Public and Stakeholder Engagement

Scope:	<ul style="list-style-type: none"> – Manage ongoing public and stakeholder communications and engagement.
Monthly Highlights:	<ul style="list-style-type: none"> – Provided a Project update to Mayor and Council for the City of Surrey and Township of Langley. – Presented a Project update to the tenants of Willowbrook Shopping Centre. – Hosted a table at the City of Surrey’s open house for the Clayton Corridor Plan. – Attended the State of B.C. Transportation Update event, hosted by the Surrey Board of Trade. – Distributed notifications to residents, businesses, and newsletter subscribers regarding Project activities such as utility relocations, roadway construction, pile installations, and foundation construction. – Completed business walks, targeted meetings, site visits and outreach with affected businesses and residents, as needed.
Three Month Lookahead:	<ul style="list-style-type: none"> – Report back on the second and final round of public engagement for station designs. – Continue to distribute notifications and respond to enquiries. – Continue business walks and ongoing outreach to residents and businesses in proximity to the alignment, as needed. – Continue regular meetings with Traffic Liaison Committee, Fleetwood Business Improvement Association, and Fleetwood Community Association. – Continue with artist selection process for station art. – Communicate to the public and stakeholders regarding the closure of Fraser Highway between 140 Street and 96 Avenue.

5. Schedule

The following schedule depicts the estimated deliverables, milestones, and timelines from the design to commissioning phase of the Project:



6. Project Photos



Figure 1: Ongoing foundation construction at the site of the future Bakerview - 166 Street Station.



Figure 2: Driven piling underway near the intersection of Fraser Highway and 176 Street (Highway 15).



Figure 3: Construction of piers that will support the future elevated guideway at 152 Street Station.

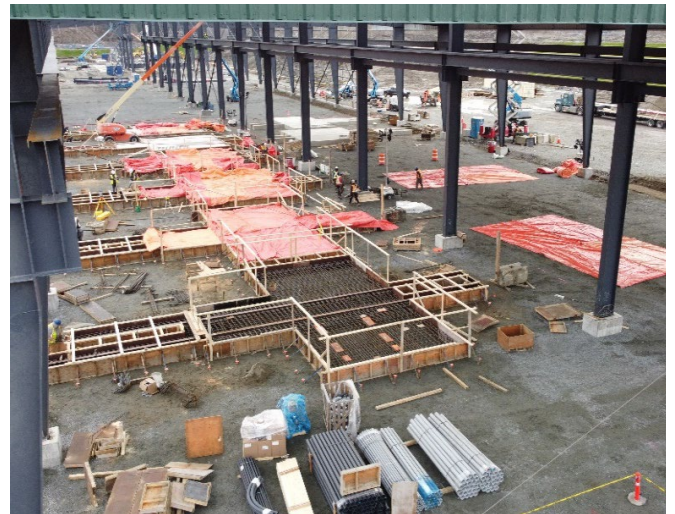


Figure 4: Ongoing construction of the production building at the precast concrete facility where the guideway segments will be produced and stored.