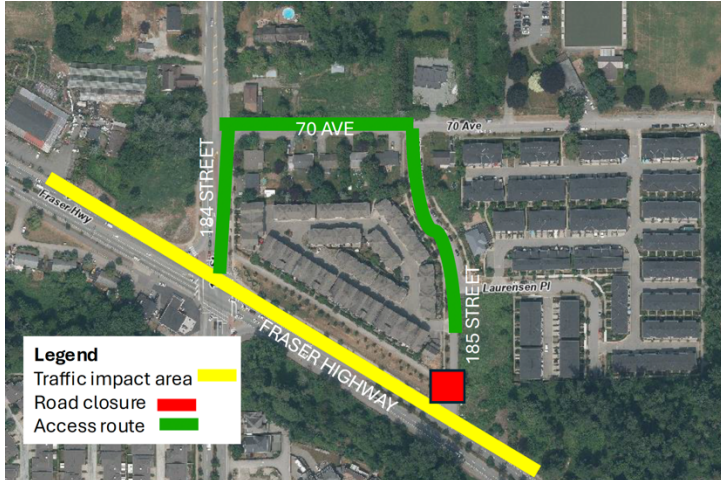


Traffic Update: Access closure at Fraser Highway and 185 Street



Map: Temporary access closure at 185 Street and Fraser Highway.

Construction of the foundations for guideway piers requires drilling concrete piles into the ground, with specialized equipment including large mobile cranes and drill rigs. This is expected to begin in the area in late March 2025 through summer 2025.

Construction for the Surrey Langley SkyTrain is underway in this area. Activities include moving existing utilities to allow for construction, installing new utilities to supply power for the future SkyTrain, roadwork and foundation construction.

To support this work, the following traffic pattern changes will be in effect:

- **Access to/from Fraser Highway at 185 Street will be temporarily closed starting March 17, 2025, for up to one week.**
- Access to/from Fraser Highway will be available via 184 Street and 70 Avenue
- Access to private paths on the north side of Fraser Highway from 184 Street to 185 Street will be maintained.
- Single lane traffic is in effect on Fraser Highway through this area.
- Traffic control personnel and signs will direct the travelling public.

What to Expect



Timing

Starting March 17, 2025, for up to one week. This timing is subject to change.



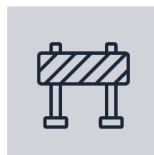
Hours of Work

Monday to Saturday from 7 a.m. to 10 p.m. The traffic closure will be in place 24/7.



Traffic

Temporary access closure at 185 Street and Fraser Highway. Single lane traffic on Fraser Highway. One lane open in each direction.



Impacts/Interruptions

The travelling public can expect delays while in the area. Pedestrians and cyclists will be detoured around work as required.

Contact

surreylangleyskytrain@gov.bc.ca
surreylangleyskytrain.ca
24/7 Info Line: 1-844-815-6111

ਜ਼ਰੂਰੀ ਜਾਣਕਾਰੀ: ਕਿਰਪਾ ਕਰਕੇ ਇਸਦਾ ਅਨੁਵਾਦ ਕਰਵਾਓ
ਜ਼ਰੂਰੀ ਜਾਨਕਾਰੀ: कृपया इसका अनुवाद करवाएं
MAHALAGANG IMPORMASYON: Mangyaring isalin ito
重要資訊: 請找人為你翻譯
중요정보: 번역해주세요

Thank you for your cooperation and understanding