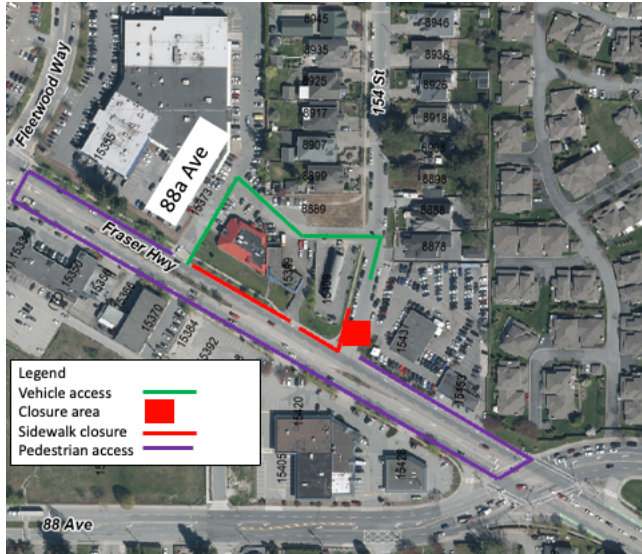




Traffic Update: Temporary access change at 154 Street and Fraser Highway



Map: Temporary access change at 154 Street and Fraser Highway.

Businesses will remain open and accessible during construction.

Construction for the Surrey Langley SkyTrain is underway in this area. Activities include moving existing utilities to allow for construction, installing new utilities to supply power for the future SkyTrain, roadwork and foundation construction. To support this work, the following traffic pattern changes will be in effect from mid-February 2025, for up to six shifts:

- Vehicle travel lanes between 152 Street and 154 Street will be reduced to single lanes westbound and eastbound.
- Access restriction at 154 Street. Access to/from Fraser Highway available via 88a Avenue.
- No right turn onto 154 Street for vehicles travelling westbound on Fraser Highway.
- Speed limit will be reduced to 30 km/hr.
- The sidewalk on the northwest corner of Fraser Highway and 154 Street will be closed.
- Pedestrians will be detoured around the work area using available crosswalks and support from traffic control personnel.
- Cyclists to share the vehicle lane through the detour area.

What to Expect



Timing

Mid-February 2025 for up to six shifts. This timing is subject to change.



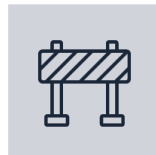
Hours of Work

Monday to Saturday from 7 a.m. to 10 p.m. Traffic pattern changes will be in effect 24/7.



Traffic

Vehicle travel lanes on Fraser Highway between 152 Street and 154 Street will be reduced to single lanes westbound and eastbound.



Impacts/Interruptions

Temporary access restriction at 154 and Fraser Highway. The travelling public can expect travel delays while in the area.

Contact

surreylangleyskytrain@gov.bc.ca

surreylangleyskytrain.ca

24/7 Info Line: 1-844-815-6111



SkyLink Guideway Partners

ਜ਼ਰੂਰੀ ਜਾਣਕਾਰੀ: ਕਿਰਪਾ ਕਰਕੇ ਇਸਦਾ ਅਨੁਵਾਦ ਕਰਵਾਓ

ज़रूरी जानकारी: कृपया इसका अनुवाद करवाएं

MAHALAGANG IMPORMASYON: Mangyaring isalin ito

重要資訊: 請找人為你翻譯

중요정보: 번역해주세요

Thank you for your cooperation and understanding