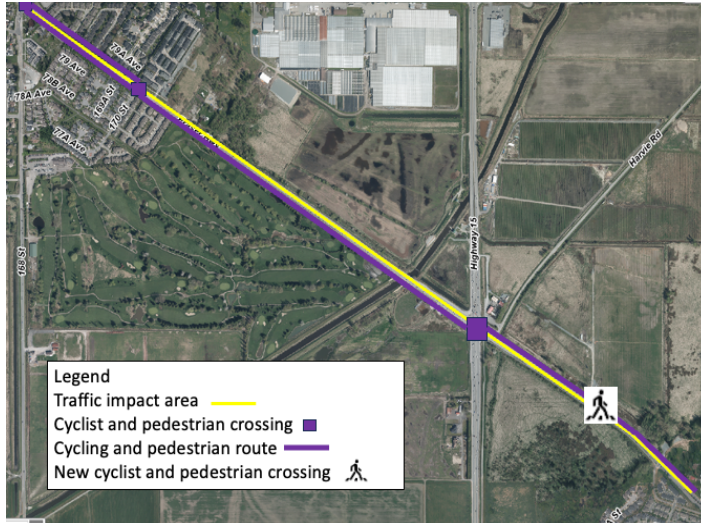




## Traffic Update: Fraser Highway between 168 Street and east of Highway 15



Map: Traffic pattern change on Fraser Highway between 168 Street and east of Highway 15

The **bus stop** located eastbound on Fraser Highway at Highway 15 (#57090) will be relocated to the west side of Highway 15.

Please refer to TransLink signage and their website ([TransLink.ca](http://TransLink.ca)) for the latest information about bus service in this area.

Construction for the Surrey Langley SkyTrain is underway in this area. Activities include moving existing utilities to allow for construction, installing new utilities to supply power for the future SkyTrain, roadwork and foundation construction. To support this work, the following traffic pattern changes will be in effect from mid-February 2025 until spring 2026:

- Vehicle travel lanes on Fraser Highway between 168 Street and east of Highway 15 will be reduced to single lanes westbound and eastbound.
- Speed limit will be reduced to 50 km/hr.
- East of Highway 15 pedestrians will use the temporary multi-use path located on the north side of Fraser Highway.
- A new temporary pedestrian and cyclist crossing signal will be installed east of Highway 15 for cyclists and pedestrians accessing the multi-use paths.
- Cyclists will use the existing bike lanes and the multi-use path on the north and south side of Fraser Highway. Cyclists will be required to cross at intersections to use available routes.

### What to Expect

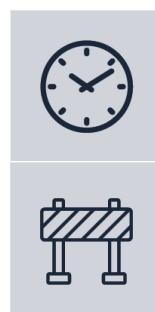


#### Timing

Mid-February 2025 through spring 2026.  
This timing is subject to change.

#### Traffic

Vehicle travel lanes on Fraser Highway between 168 Street and east of Highway 15 will be reduced to single lanes westbound and eastbound.



#### Hours of Work

Monday to Saturday from 7 a.m. to 10 p.m.  
Traffic pattern changes will be in effect 24/7.

#### Impacts/Interruptions

The travelling public can expect delays while in the area. There will be a temporary increase in noise while this work is taking place.

### Contact

[surreylangleyskytrain@gov.bc.ca](mailto:surreylangleyskytrain@gov.bc.ca)  
[surreylangleyskytrain.ca](http://surreylangleyskytrain.ca)  
24/7 Info Line: 1-844-815-6111

ਜ਼ਰੂਰੀ ਜਾਣਕਾਰੀ: ਕਿਰਪਾ ਕਰਕੇ ਇਸਦਾ ਅਨੁਵਾਦ ਕਰਵਾਓ  
ज़रूरी जानकारी: कृपया इसका अनुवाद करवाएं

MAHALAGANG IMPORMASYON: Mangyaring isalin ito

重要資訊: 請找人為你翻譯

중요정보: 번역해주세요

Thank you for your cooperation and understanding