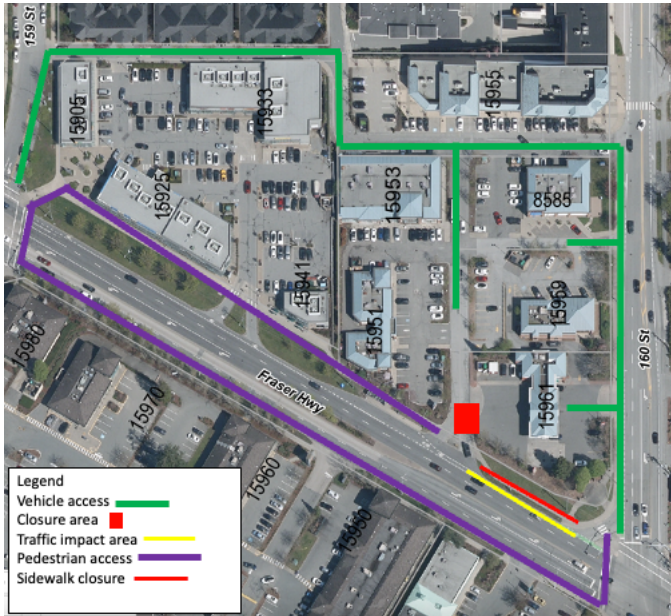




Traffic Update: Temporary access change west of 160 Street and Fraser Highway



Map: Temporary access change west of 160 Street and Fraser Highway.

Businesses will remain accessible during construction.

Construction for the Surrey Langley SkyTrain is underway in this area. Activities include moving existing utilities to allow for construction, installing new utilities to supply power for the future SkyTrain, roadwork and foundation construction. To support this work, the following traffic pattern changes will be in effect from late February 2025 for approximately ten days:

- Westbound right lane closure on Fraser Highway west of 160 Street.
- Right turn access to businesses west of 160 Street restricted from Fraser Highway for the duration of this work.
- Right turn exit from businesses will be restricted for a portion of this work, depending on work location.
- Business access via 160 Street and 159 Street.
- Speed limit reduced to 50 km/hr.
- A portion of the sidewalk closed on the north side Fraser Highway near 160 Street. Pedestrians will be detoured to the south side of Fraser Highway using available crosswalks.
- Cyclists will share the vehicle lane through the traffic impact area.

What to Expect



Timing

Late February 2025 for approximately ten days. This timing is subject to change.



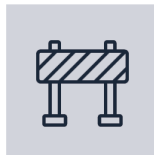
Hours of Work

Monday to Saturday from 7 a.m. to 10 p.m.
Traffic pattern changes will be in effect 24/7.



Traffic

Westbound right lane closure on Fraser Highway west of 160 Street.



Impacts/Interruptions

Temporary access change on Fraser Highway west of 160 Street. The travelling public can expect travel delays while in the area.

Contact

surreylangleyskytrain@gov.bc.ca

surreylangleyskytrain.ca

24/7 Info Line: 1-844-815-6111



SkyLink Guideway Partners

ਜ਼ਰੂਰੀ ਜਾਣਕਾਰੀ: ਕਿਰਪਾ ਕਰਕੇ ਇਸਦਾ ਅਨੁਵਾਦ ਕਰਵਾਓ

ज़रूरी जानकारी: कृपया इसका अनुवाद करवाएं

MAHALAGANG IMPORMASYON: Mangyaring isalin ito

重要資訊: 請找人為你翻譯

중요정보: 번역해주세요

Thank you for your cooperation and understanding