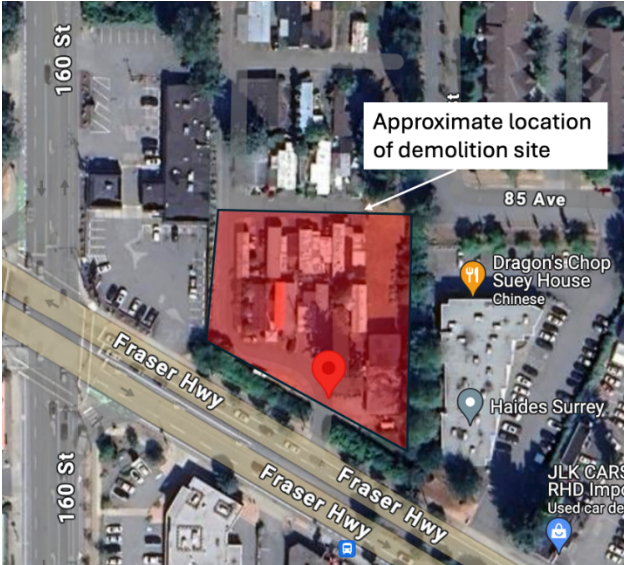


Demolition work at 16039 Fraser Highway



Map: Approximate work area (shown in red) at 16039 Fraser Highway.

To prepare for the construction of the Surrey Langley SkyTrain, early works are underway in the area.

Demolition of select existing structures including utility disconnections, hazardous material abatements, and other related activities, will take place at 16039 Fraser Highway in the coming weeks.

The workplan and schedule is subject to change.

What to Expect



Timing

Construction activities are expected to begin in early August 2024 and will continue intermittently until October 2024. The demolition is expected by September 10, 2024.



Hours of Work

Monday to Friday from 7 a.m. to 8 p.m.



Traffic

No traffic impacts are anticipated for this work.



Impacts/Interruptions

There may be a temporary increase of noise while this work is taking place.

Contact

surreylangleyskytrain@gov.bc.ca

surreylangleyskytrain.ca



SkyLink Guideway Partners

ਜ਼ਰੂਰੀ ਜਾਣਕਾਰੀ: ਕਿਰਪਾ ਕਰਕੇ ਇਸਦਾ ਅਨੁਵਾਦ ਕਰਵਾਓ

ਜ਼ਰੂਰੀ ਜਾਣਕਾਰੀ: ਕ੍ਰਪਯਾ ਇਸਕਾ ਅਨੁਵਾਦ ਕਰਵਾਏ

MAHALAGANG IMPORMASYON: Mangyaring isalin ito

重要資訊: 請找人為你翻譯

중요정보: 번역해주세요

Thank you for your cooperation and understanding