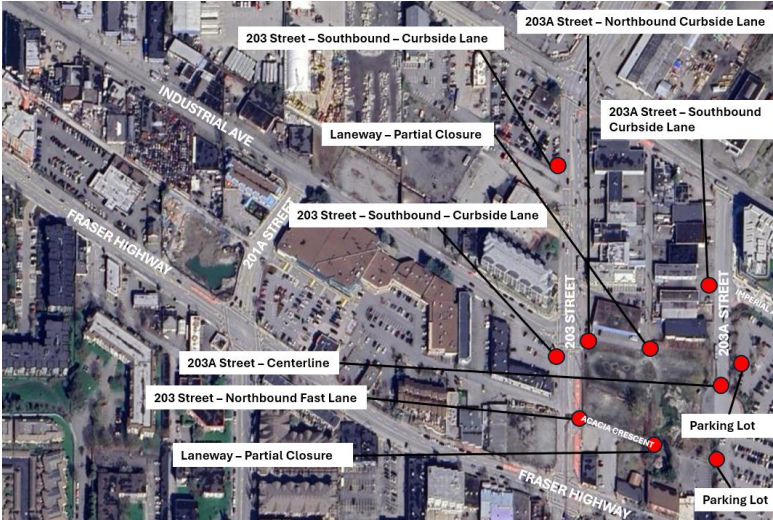


Lane Reduction on 203 Street, 203A Street and Acacia Crescent



To prepare for construction of the Surrey Langley SkyTrain, crews will be conducting pre-condition surveys (PCS) around the future Langley City Centre Station and the 201 Street Propulsion Power Substation (PPS) from July 31 to August 2, 2024.

The PCS include inspecting area sewer lines. The sewer line CCTV inspections will require lane reductions to support the inspection vehicle and activities.

Traffic on 203 Street, 203A Street and Acacia Crescent will be reduced to one lane between July 31 and August 2 to support manhole access and inspection activities. Each work zone will be completed one at a time – none of the closures will happen at the same time. Access to businesses, parking lots, pedestrian and cyclist routes, bus stops, and emergency routes will be maintained. Photography and videography will be taken as part of the survey work.

What to Expect



Timing

July 31 to August 2, 2024



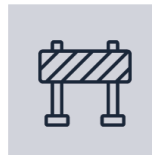
Hours of Work

Daytime Hours: Monday to Friday – 7 a.m. to 7 p.m.



Traffic

Temporary single-lane closures. Roadside signage will provide advance notification of the lane closure and traffic control personnel will be onsite to direct traffic as required.



Impacts/Interruptions

No other impacts are anticipated.

Contact

surreylangleyskytrain@gov.bc.ca

surreylangleyskytrain.ca



South Fraser Station Partners

ਜ਼ਰੂਰੀ ਜਾਣਕਾਰੀ: ਕਿਰਪਾ ਕਰਕੇ ਇਸਦਾ ਅਨੁਵਾਦ ਕਰਵਾਓ

ज़रूरी जानकारी: कृपया इसका अनुवाद करवाएं

MAHALAGANG IMPORMASYON: Mangyaring isalin ito

重要資訊: 請找人為你翻譯

중요정보: 번역해주세요

Thank you for your cooperation and understanding